



Cumberland Court, Great Cumberland Place,
Marylebone, W1H

£750 Per Week,

NAPIER WATT

T: 0207 935 0011
E: enquiries@napierwatt.co.uk
W: napierwatt.co.uk

35 Berkeley Square, Mayfair, London, W1J 5BF







Description

Well-presented, two-bedroom apartment in this portered block near Marble Arch. Laid out over 583sq ft and set on the seventh floor (with lift), the apartment comprises two bedrooms, one bathroom, a spacious living room with wooden flooring and an open plan kitchen. The property is walking distance to Oxford Street and Hyde Park. Available, furnished.

2 Bedrooms : 1 Bathrooms : 24-Hour Porter : Passenger Lift : Westminster Council Tax Band E : EPC Rating C

Key Features

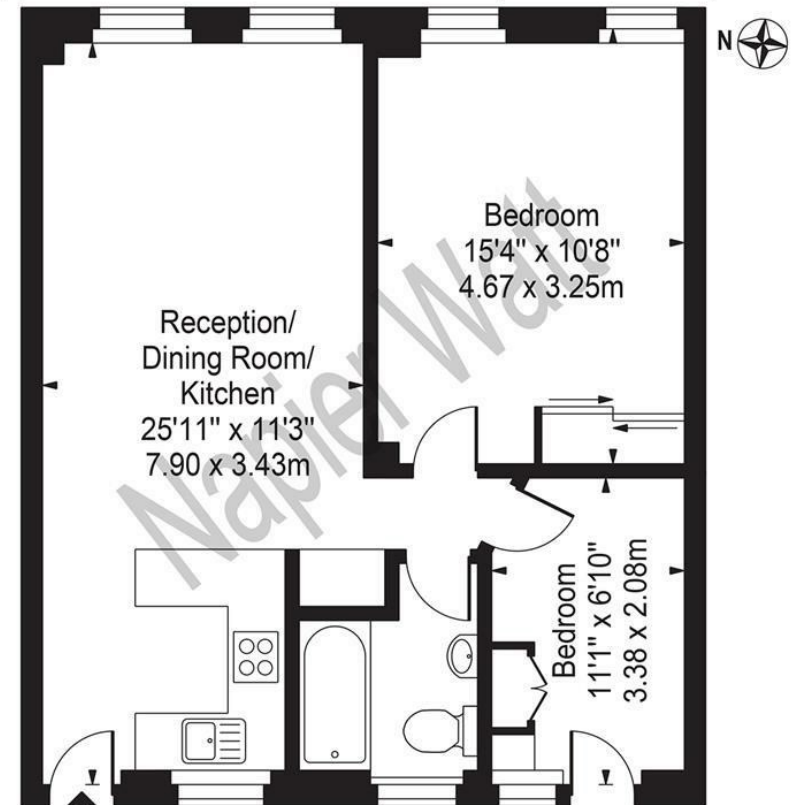
- NEWLY REFURBISHED
- 24-HOUR PORTER
- LIFT
- MOMENTS FROM HYDE PARK

Terms

Fees & Charges: Tenancies exceeding £100,000 Per annum £480 inc VAT, Tenancies where a company is a tenant £480 Inc VAT.

Cumberland Court

Approx. Gross Internal Area 586 Sq Ft - 54.44 Sq M



Seventh Floor

For Illustration Purposes Only - Not To Scale

This floor plan should be used as a general outline for guidance only and does not constitute in whole or in part an offer or contract. Any intending purchaser or lessee should satisfy themselves by inspection, searches, enquiries and full survey as to the correctness of each statement. Any areas, measurements or distances quoted are approximate and should not be used to value a property or be the basis of any sale or let.

IMPORTANT: We would inform prospective purchasers that these sales particulars have been prepared as a general guide only. A detailed survey has not been carried out, nor the services, appliances and fittings tested. Room sizes should not be relied upon for furnishing purposes and are approximate. If floor plans are included, they are for guidance only and illustration purposes only and may not be to scale. If there are any important matters likely to affect your decision to buy, please contact us before viewing the property.