



Chesterfield House, South Audley Street,  
Mayfair, W1K

£2,650 Per Week,

NAPIER WATT

T: 0207 935 0011  
E: [enquiries@napierwatt.co.uk](mailto:enquiries@napierwatt.co.uk)  
W: [napierwatt.co.uk](http://napierwatt.co.uk)

35 Berkeley Square, Mayfair, London, W1J 5BF









## Description

Beautifully refurbished apartment in this desirable Mayfair residence. Set on the seventh floor (with lift), this lateral three bedroom apartment of approximately 1,859sq ft has been renovated to very high standard. Comprising a spacious living room, with dining area that opens out onto a balcony with views to Hyde Park, kitchen, two en-suite bedrooms, a third bedroom and a separate shower room. The building benefits from heating and hot water included, 24-hour porters and a lift. The property is a short walk from Hyde Park Corner underground station as well as the amenities of Curzon Street and Piccadilly.

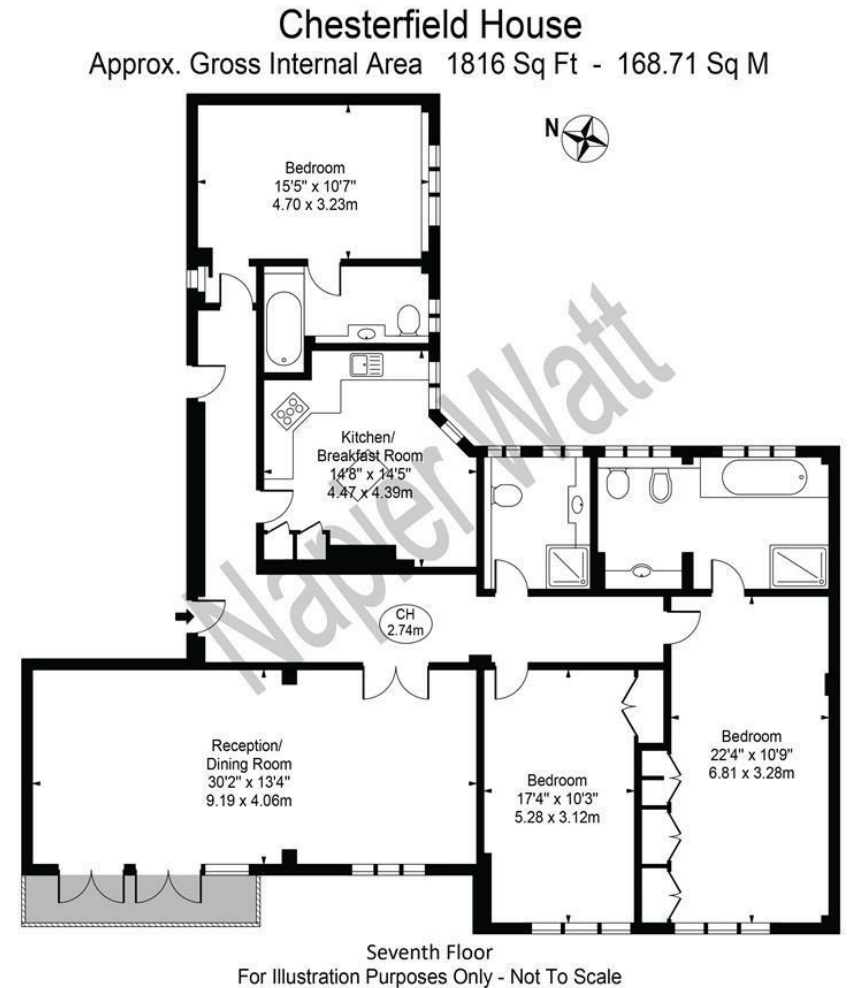
3 Bedrooms : 3 Bathrooms : Lift : AC : 24-Hour Porter : Balcony : EPC Rating C : Westminster Council Tax Band H

## Key Features

- 24-HOUR PORTER
- NEWLY REFURBISHED
- BALCONY
- LIFT
- HEATING INCLUDED
- VIEWS TOWARD HYDE PARK

## Terms

Fees & Charges: Tenancies exceeding £100,000 Per annum £480 inc VAT, Tenancies where a company is a tenant £480 Inc VAT.



This floor plan should be used as a general outline for guidance only and does not constitute in whole or in part an offer or contract. Any intending purchaser or lessee should satisfy themselves by inspection, searches, enquiries and full survey as to the correctness of each statement. Any areas, measurements or distances quoted are approximate and should not be used to value a property or be the basis of any sale or let.

IMPORTANT: We would inform prospective purchasers that these sales particulars have been prepared as a general guide only. A detailed survey has not been carried out, nor the services, appliances and fittings tested. Room sizes should not be relied upon for furnishing purposes and are approximate. If floor plans are included, they are for guidance only and illustration purposes only and may not be to scale. If there are any important matters likely to affect your decision to buy, please contact us before viewing the property.