



Faraday House, 30 Blandford Street,  
Marylebone, W1U

£1,100 Per Week,

NAPIER WATT

T: 0207 935 0011  
E: [enquiries@napierwatt.co.uk](mailto:enquiries@napierwatt.co.uk)  
W: [napierwatt.co.uk](http://napierwatt.co.uk)

35 Berkeley Square, Mayfair, London, W1J 5BF











## Description

A recently refurbished two-bedroom apartment in Faraday House. This property comprises two double bedrooms, two bathrooms, open plan living room kitchen and a balcony. Located on second floor of this popular, modern purpose-built block in the heart of Marylebone, the flat offers 748sq ft / 69sq m of accommodation. The wooden decked balcony faces west, overlooking the tranquil and attractive internal courtyard and can be accessed from both the living room and master bedroom. Residents benefits from air-conditioning, one parking space and day porter 7am - 7pm (weekdays). Available, furnished.

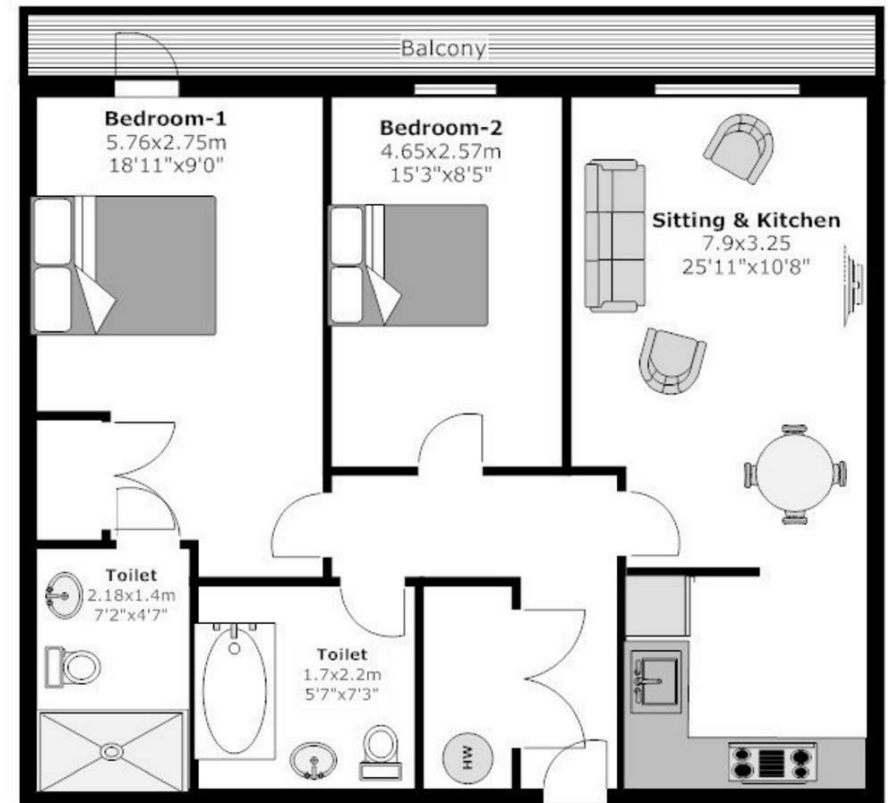
2 Bedrooms : 2 Bathrooms : Balcony : Porter : AC : Parking : Westminster Council Tax Band G : EPC Rating C

## Key Features

- DAY PORTER
- SECURE UNDERGROUND PARKING
- BALCONY
- 200M FROM THE HIGH STREET
- LIFTS
- COMMUNAL GARDEN
- AIR CONDITIONING
- FURNISHED

## Terms

**Fees & Charges:** Tenancies exceeding £100,000 Per annum £480 inc VAT, Tenancies where a company is a tenant £480 Inc VAT.



**Flat 44, Faraday House, Blandford Street, W1U**  
Total Approx. floor area 69.52 Square Meter (748 Square Feet)  
Measurements are approximate. Not to scale. Illustrative purpose only.

IMPORTANT: We would inform prospective purchasers that these sales particulars have been prepared as a general guide only. A detailed survey has not been carried out, nor the services, appliances and fittings tested. Room sizes should not be relied upon for furnishing purposes and are approximate. If floor plans are included, they are for guidance only and illustration purposes only and may not be to scale. If there are any important matters likely to affect your decision to buy, please contact us before viewing the property.