



39, Hill Street,
Mayfair, W1J

£875 Per Week,

NAPIER WATT

T: 0207 935 0011
E: enquiries@napierwatt.co.uk
W: napierwatt.co.uk

35 Berkeley Square, Mayfair, London, W1J 5BF







Description

The apartment is set over 602sq ft and offers a large double bedroom, modern fitted bathroom, spacious reception room and modern fitted kitchen and benefits from ample storage space. Hill Street, benefits from spacious living accommodation, lift service, on-site building manager, and is nestled conveniently between two of London's parks Hyde Park and Green Park. The transport links include underground stations which are Green Park Station and Bond Street station, Marble Arch Station all within a short stroll away.

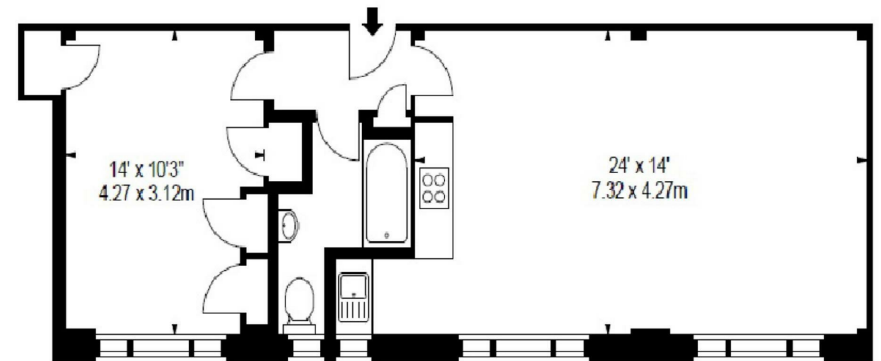
1 Bedrooms : 1 Bathrooms : EPC Rating D : Westminster Council Tax

Key Features

- DAY TIME BUILDING MANAGER
- LIFT

Terms

Fees & Charges: Tenancies exceeding £100,000 Per annum £480 inc VAT, Tenancies where a company is a tenant £480 Inc VAT.



IMPORTANT: We would inform prospective purchasers that these sales particulars have been prepared as a general guide only. A detailed survey has not been carried out, nor the services, appliances and fittings tested. Room sizes should not be relied upon for furnishing purposes and are approximate. If floor plans are included, they are for guidance only and illustration purposes only and may not be to scale. If there are any important matters likely to affect your decision to buy, please contact us before viewing the property.