



Strathmore Court, Park Road,
Regents Park, NW8

£2,150 Per Week,

NAPIER WATT

T: 0207 935 0011
E: enquiries@napierwatt.co.uk
W: napierwatt.co.uk

35 Berkeley Square, Mayfair, London, W1J 5BF







Description

Five double bedroom apartment set over 2545 sq ft, located on the fourth floor of a prestigious mansion block offering fabulous views over Regent's Park.

Apartment comprises four/five double bedrooms (four bedrooms with en-suite bathrooms), spacious reception room with plenty of light and superb views, a fully fitted eat-in kitchen, guest cloakroom, and with ample storage space.

This beautiful apartment building is located directly opposite one of the entrances to Regent's Park which provides an array of sporting facilities including the largest outdoor sports area in central London.

Strathmore Court is located within a 10 minute walk from St John's Wood underground station (Jubilee Line), Marylebone station (Bakerloo and national railway).

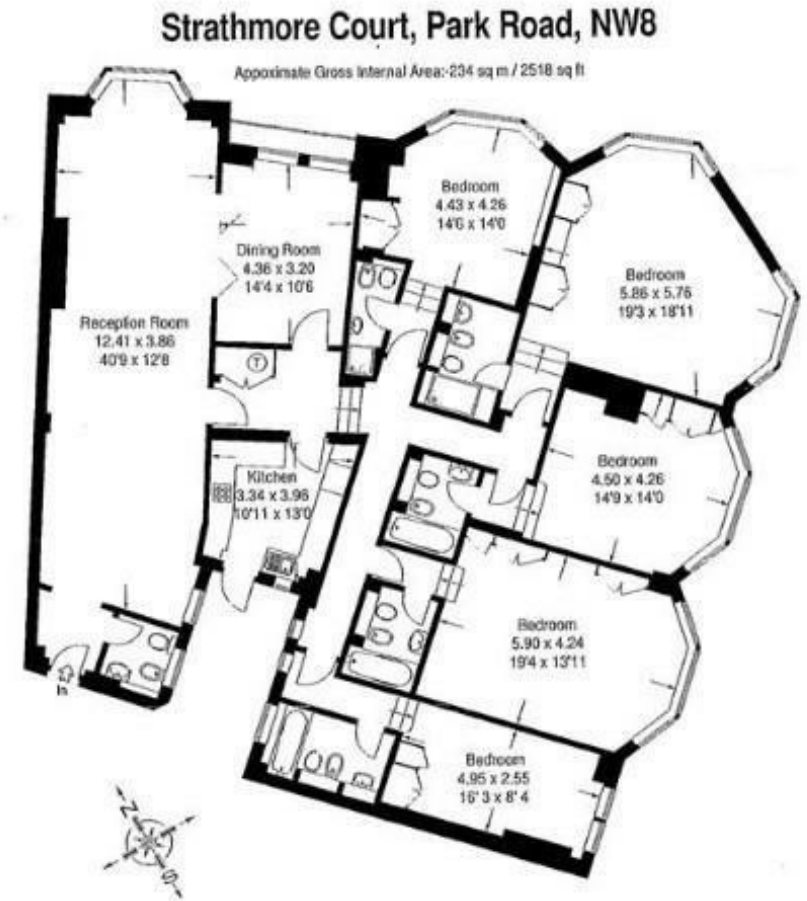
Strathmore Court would be ideally suited to young professionals or students due to its proximity to the West End, as well as a number of top colleges and universities such as London Business School, University of Westminster and the Royal College of Physicians.

Key Features

- ON SITE PORTER
- VIEWS OVER REGENTS PARK
- LIFTS
- PRIVATE ENTRANCE
- CCTV

Terms

Fees & Charges: Tenancies exceeding £100,000 Per annum £480 inc VAT, Tenancies where a company is a tenant £480 Inc VAT.



IMPORTANT: We would inform prospective purchasers that these sales particulars have been prepared as a general guide only. A detailed survey has not been carried out, nor the services, appliances and fittings tested. Room sizes should not be relied upon for furnishing purposes and are approximate. If floor plans are included, they are for guidance only and illustration purposes only and may not be to scale. If there are any important matters likely to affect your decision to buy, please contact us before viewing the property.