



24, Buckingham Gate,  
Westminster, SW1E

Asking Price £3,500,000, Leasehold

NAPIER WATT

T: 0207 935 0011  
E: [enquiries@napierwatt.co.uk](mailto:enquiries@napierwatt.co.uk)  
W: [napierwatt.co.uk](http://napierwatt.co.uk)

35 Berkeley Square, Mayfair, London, W1J 5BF











## Description

This luxurious lateral apartment, Three Bedroom All EnSuite set within a beautifully restored building opposite the iconic Wellington Barracks and St. James's Park, offers an exceptional fusion of contemporary design and historic elegance.

Finished to the highest standard, this single-floor residence provides a perfect blend of spaciousness, convenience, and sophisticated living. The apartment boasts three en suite bedrooms with lavish bathrooms, while the master suite also features a walk-in wardrobe, providing ample storage and an extra touch of luxury.

This prime location, just moments from Buckingham Palace, and within a stone's throw of all Central London amenities, makes this apartment truly unique.

Entrance Hal : Double Reception Room : Kitchen : 3 Bedrooms all Ensuite : Guest WC : Utility Room : Day Porter : Air Conditioning : Lift : EPC Rating E

## Key Features

- LUXURIOUS INTERIOR DESIGNED
- FIRST FLOOR
- AIR CONDITIONED
- DAY PORTER
- 200M FROM GREEN AND ST JAMES PARK
- BUCKINGHAM PALACE

## Terms

Tenure : Leasehold, expires 09/11/3014

Ground rent : £2,500 pa

Service charge :£18,000 pa (reviewed annually)

Buckingham Gate, SW1E

Approximate Gross Internal Area  
172.64 sq m / 1,858 sq ft



First Floor

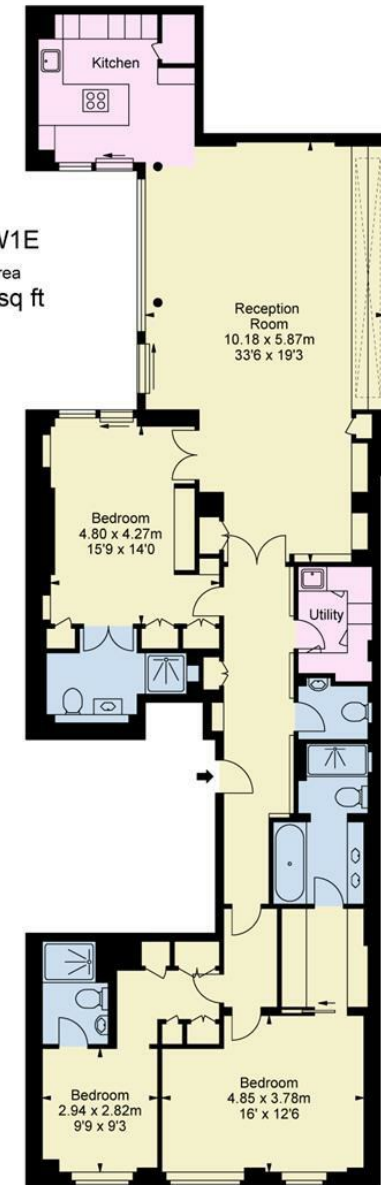


ILLUSTRATION FOR IDENTIFICATION PURPOSES ONLY  
ALL MEASUREMENTS ARE MAXIMUM AND INCLUDE WINDOW BAYS AND WARDROBES WHERE APPLICABLE  
THIS PLAN MUST NOT BE REPRODUCED BY ANY OTHER PERSON WITHOUT PERMISSION

IMPORTANT: We would inform prospective purchasers that these sales particulars have been prepared as a general guide only. A detailed survey has not been carried out, nor the services, appliances and fittings tested. Room sizes should not be relied upon for furnishing purposes and are approximate. If floor plans are included, they are for guidance only and illustration purposes only and may not be to scale. If there are any important matters likely to affect your decision to buy, please contact us before viewing the property.