



, Montagu Mansions,
Marylebone, W1U

£1,500 Per Week,

NAPIER WATT

T: 0207 935 0011
E: enquiries@napierwatt.co.uk
W: napierwatt.co.uk

35 Berkeley Square, Mayfair, London, W1J 5BF







Description

Charming three-bedroom apartment set on the second floor (with lift) of this desirable red brick mansion block. Recently refurbished and benefitting from a 24-porter service, the apartment comprises a spacious entrance hallway, stunning living room with plenty of natural light from the French windows, leading to a Juliet balcony, a fitted kitchen boasting parquet flooring and a marble splash-back, three bedrooms, an elegant shower room and a guest cloakroom. Conveniently located near Marylebone High Street, this home has a plethora of boutiques and restaurants a stone's throw away, not to mention Regent's Park. Available, furnished.

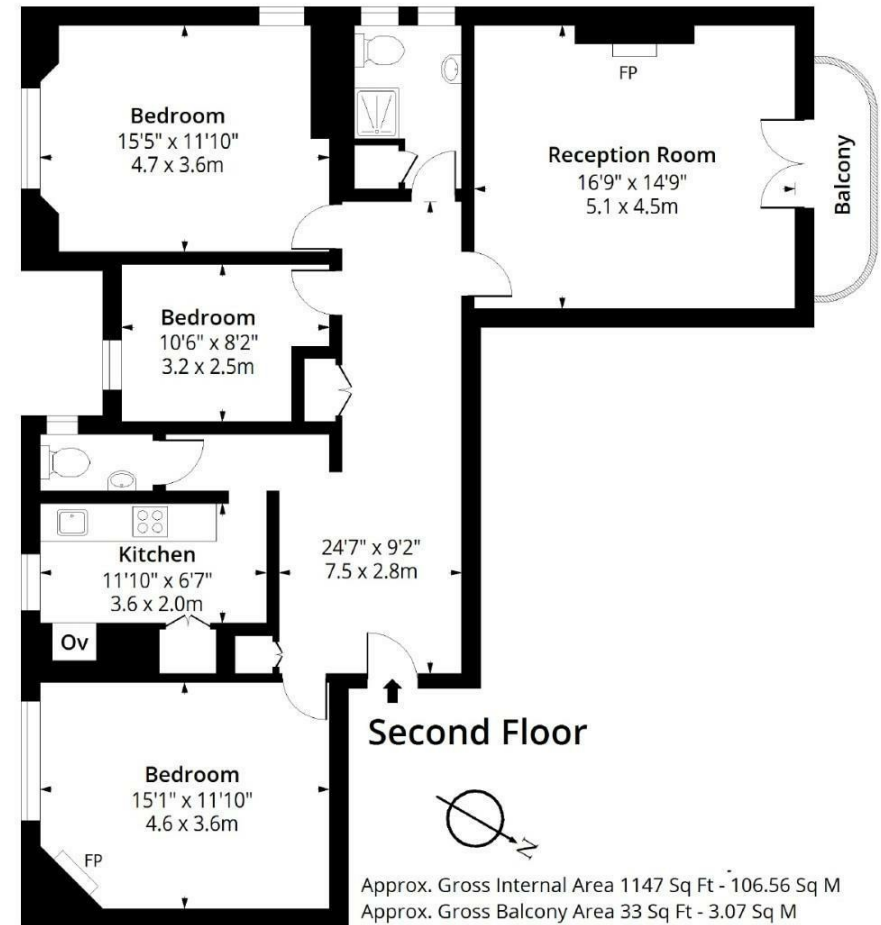
3 Bedrooms : Bathroom : Guest W.C. : Balcony : 24-Hour Porter : Westminster Council Tax Band F : EPC Rating C

Key Features

- THREE BEDROOMS
- 24-HOUR PORTER
- WELL-PRESENTED
- BALCONY
- MANSION BLOCK

Terms

Fees & Charges: Tenancies exceeding £100,000 Per annum £480 inc VAT, Tenancies where a company is a tenant £480 Inc VAT.



IMPORTANT: We would inform prospective purchasers that these sales particulars have been prepared as a general guide only. A detailed survey has not been carried out, nor the services, appliances and fittings tested. Room sizes should not be relied upon for furnishing purposes and are approximate. If floor plans are included, they are for guidance only and illustration purposes only and may not be to scale. If there are any important matters likely to affect your decision to buy, please contact us before viewing the property.