



Westmark Tower Newcastle Place, , W2

Guide Price £1,600,000, Leasehold







Description

BY ORDER OF RECEIVER- Competitively priced for a quick sale.

Enjoy panoramic views from this amazing 3-bedroom apartment on the 21st floor of Westmark Tower, part of the West End Gate development by Berkeley.

The open-plan living area connects to a modern kitchen with sleek appliances. Floor-to-ceiling windows provide plenty of natural light and impressive views.

The spacious bedrooms offer a peaceful retreat with views of Hyde Park. The master bedroom has an en-suite bathroom, while the other two bedrooms share a bathroom.

Residents of Westmark Tower are indulged with world-class amenities, including a dedicated concierge service and access to a private gymnasium. For those seeking relaxation, a tranquil communal garden oasis is also available.

EPC Rating B.

Key Features

- 24 HOURS CONCIERGE SERVICE
- SWIMMING POOL
- CINEMA ROOM
- VIEW OVERLOOKING HYDE PARK
- GYM
- STEAM & SAUNA
- LOUNGE
- BALCONY

Terms

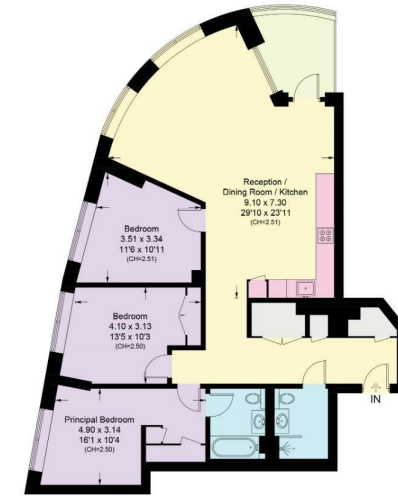
Leasehold- 998 years remaining, expires 12/03/3023

Service Charge- £4152.21 per half annum ie £8304.42 per annum.

Ground Rent - £1000 per annum

Westmark Tower, Newcastle Place, W2

Approximate Area = 110.8 sq m / 1193 sq ft



Twenty First Floor

Surveyed and drawn in accordance with the International property measurements standards (IPMS 2: Residential) Not drawn to scale unless stated. Whilst every care is taken in the preparation of this plan, please check all dimensions, shapes and compass bearings before making any decisions reliant upon them.

IMPORTANT: We would inform prospective purchasers that these sales particulars have been prepared as a general guide only. A detailed survey has not been carried out, nor the services, appliances and fittings tested. Room sizes should not be relied upon for furnishing purposes and are approximate. If floor plans are included, they are for guidance only and illustration purposes only and may not be to scale. If there are any important matters likely to affect your decision to buy, please contact us before viewing the property.