



, 1 Red Lion Yard,  
Mayfair, W1J

£750 Per Week,

NAPIER WATT

T: 0207 935 0011  
E: [enquiries@napierwatt.co.uk](mailto:enquiries@napierwatt.co.uk)  
W: [napierwatt.co.uk](http://napierwatt.co.uk)

35 Berkeley Square, Mayfair, London, W1J 5BF









## Description

A stunning, interior designed and refurbished one bedroom first floor apartment set within this discreetly positioned period house in the heart of Mayfair, just off Hill Street. The apartment offers 412sq ft / 38sq m of accommodation and is in outstanding condition with modern furniture and fittings. It benefits from air conditioning, central heating, double glazed windows, some wood floors and newly fitted bespoke kitchen and shower room. Red Lion Yard is a quiet, cobbled mews set just off Waverton Street and between Hill Street and Charles Street. Available, furnished.

1 Bedroom : 1 Bathroom : EPC Rating C : Westminster Council Tax Band F

## Key Features

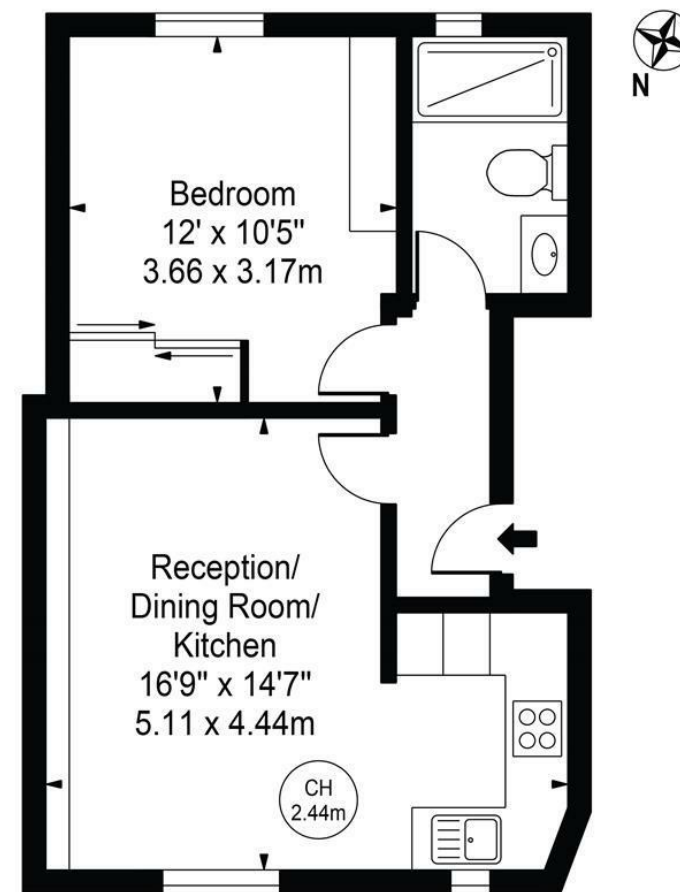
- SECLUDED QUIET MEWS
- INTERIOR DESIGNED
- FIRST FLOOR
- AIR CONDITIONING
- FULLY FURNISHED
- HEART OF MAYFAIR

## Terms

Fees & Charges: Tenancies exceeding £100,000 Per annum £480 inc VAT, Tenancies where a company is a tenant £480 Inc VAT.

## Red Lion Yard

Approx. Gross Internal Area 412 Sq Ft - 38.28 Sq M



## First Floor

For Illustration Purposes Only - Not To Scale

This floor plan should be used as a general outline for guidance only and does not constitute in whole or in part an offer or contract. Any intending purchaser or lessee should satisfy themselves by inspection, searches, enquiries and full survey as to the correctness of each statement. Any areas, measurements or distances quoted are approximate and should not be used to value a property or be the basis of any sale or let.

IMPORTANT: We would inform prospective purchasers that these sales particulars have been prepared as a general guide only. A detailed survey has not been carried out, nor the services, appliances and fittings tested. Room sizes should not be relied upon for furnishing purposes and are approximate. If floor plans are included, they are for guidance only and illustration purposes only and may not be to scale. If there are any important matters likely to affect your decision to buy, please contact us before viewing the property.