



1, Osnaburgh Street,  
Regents Park, NW1

£950 Per Week,

NAPIER WATT

T: 0207 935 0011  
E: [enquiries@napierwatt.co.uk](mailto:enquiries@napierwatt.co.uk)  
W: [napierwatt.co.uk](http://napierwatt.co.uk)

35 Berkeley Square, Mayfair, London, W1J 5BF











## Description

Bright and airy two-bedroom apartment in this modern building near Regents Park. Set on the fifth floor (with lift) of a portered block, this lateral apartment offers 856sq ft and comprises an open plan living room kitchen, master bedroom with en-suite, second bedroom and a separate bathroom. The property boasts fantastic light, and is moments from Regents Park, not to mention a wealth of shops and transport links in the area. Available, furnished.

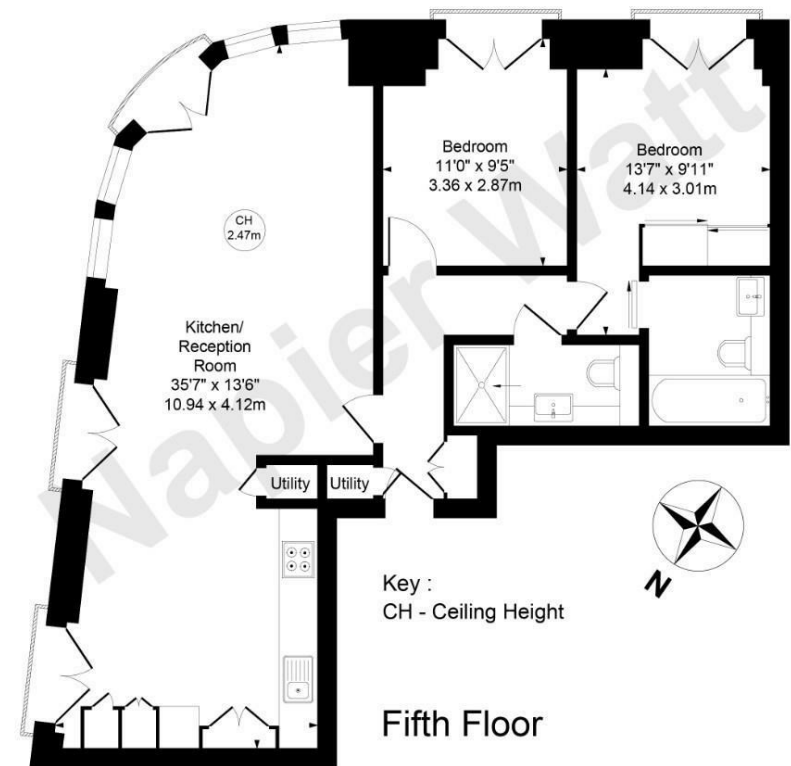
2 Bedrooms : 2 Bathrooms : Porter : Lift : EPC Rating B : Camden Council Tax Band G

## Key Features

- MODERN DEVELOPMENT
- PASSENGER LIFT
- PORTER
- NEAR REGENTS PARK

## Terms

Fees & Charges: Tenancies exceeding £100,000 Per annum £480 inc VAT, Tenancies where a company is a tenant £480 Inc VAT.



Osnaburgh Street, NW1

Approx. Gross internal Area 856 Sq Ft - 79.58 Sq M

Not to scale, for guidance only and must not be relied upon as a statement of fact.  
All measurements and areas are approximate only

IMPORTANT: We would inform prospective purchasers that these sales particulars have been prepared as a general guide only. A detailed survey has not been carried out, nor the services, appliances and fittings tested. Room sizes should not be relied upon for furnishing purposes and are approximate. If floor plans are included, they are for guidance only and illustration purposes only and may not be to scale. If there are any important matters likely to affect your decision to buy, please contact us before viewing the property.