



15, Portman Square,  
, W1H

£1,250 Per Week,

NAPIER WATT

T: 0207 935 0011  
E: [enquiries@napierwatt.co.uk](mailto:enquiries@napierwatt.co.uk)  
W: [napierwatt.co.uk](http://napierwatt.co.uk)

35 Berkeley Square, Mayfair, London, W1J 5BF









## Description

Lateral, three-bedroom apartment in this impressive Portman Square address. With 24-hour porters and lifts, residents can also access the garden square. This second floor property consists of a double reception room, kitchen, three bedrooms and three bathrooms. Superbly located for transport, shopping and the amenities of Oxford Street, Selfridges, Marble Arch, Hyde Park and Marylebone. Available, furnished.

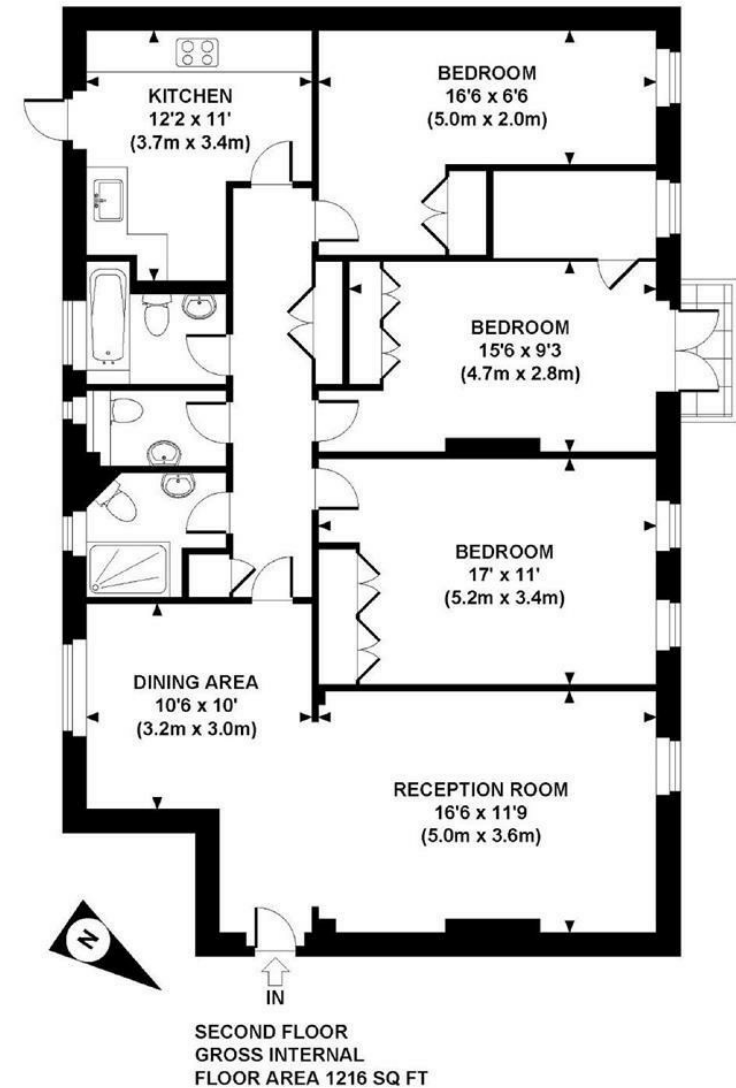
3 Bedrooms : 3 Bathrooms : Lifts : Porter : Access To Garden Square : EPC Rating C : Westminster Council Tax Band G

## Key Features

- 24-HOUR PORTER
- GARDEN SQUARE
- MARYLEBONE
- PASSENGER LIFTS
- BOND STREET STATION
- FURNISHED

## Terms

Fees & Charges: Tenancies exceeding £100,000 Per annum £480 inc VAT, Tenancies where a company is a tenant £480 Inc VAT.



APPROX. GROSS INTERNAL FLOOR AREA 1216 SQ FT / 113 SQ M  
Floorplans are for identification and guideline purposes only, not to scale.  
Compliant with RICS code of measuring practice.  
Floorplans supplied by [www.draftingfloorplan.com](http://www.draftingfloorplan.com)

IMPORTANT: We would inform prospective purchasers that these sales particulars have been prepared as a general guide only. A detailed survey has not been carried out, nor the services, appliances and fittings tested. Room sizes should not be relied upon for furnishing purposes and are approximate. If floor plans are included, they are for guidance only and illustration purposes only and may not be to scale. If there are any important matters likely to affect your decision to buy, please contact us before viewing the property.