



Greenhaven Court, Montagu Place,
Marylebone, W1H

Asking Price £1,500,000, Leasehold

NAPIER WATT

T: 0207 935 0011
E: enquiries@napierwatt.co.uk
W: napierwatt.co.uk

35 Berkeley Square, Mayfair, London, W1J 5BF







Description

An exceptionally bright, two bedroom, two bathroom third floor flat offered in good condition benefiting from a lift, day porter and secure parking space.

Greenhaven Court is proudly located on corner of Gloucester Place and Montagu Place, and has recently undertaken a full program of exterior decoration and redecorated communal areas. Features include a lift, day porter, secure reserved parking space and a long lease.

Entrance Hall : Dual Aspect Reception Room With Open Plan Kitchen And Breakfast Bar : Master Bedroom With En Suite Shower Room And Balcony : Further Bedroom : Bathroom : Secure Parking Space : Lift : Day Porter : EPC Rating C

Key Features

- EXCEPTIONALLY BRIGHT, DOUBLE ASPECT
- SECURE RESERVED PARKING SPACE
- RECENTLY DECORATED EXTERIOR & COMMUNAL AREAS
- LIFT
- DAY PORTER
- LEASE 139 YEARS

Terms

Leasehold : From and including 6 February 2012 to and including 15 March 2151 ie 139 years

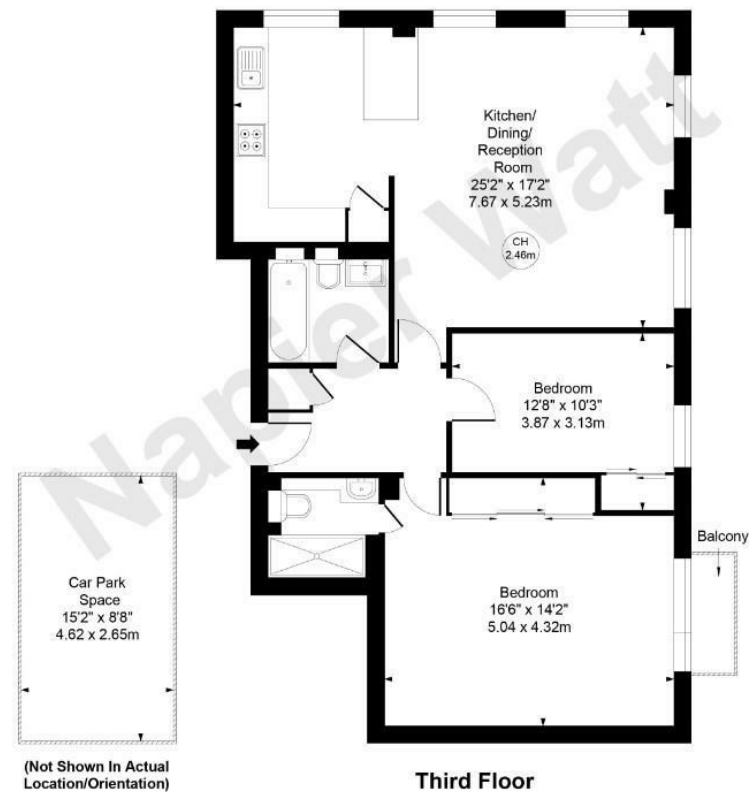
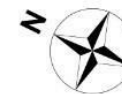
Council Tax Band : Westminster Band G

Service Charge : £1,635 per quarter

Greenhaven Court, W1H

Approx. Gross internal Area 911 Sq Ft - 85 Sq M

Key :
CH - Ceiling Height



Not to scale, for guidance only and must not be relied upon as a statement of fact.
All measurements and areas are approximate only

IMPORTANT: We would inform prospective purchasers that these sales particulars have been prepared as a general guide only. A detailed survey has not been carried out, nor the services, appliances and fittings tested. Room sizes should not be relied upon for furnishing purposes and are approximate. If floor plans are included, they are for guidance only and illustration purposes only and may not be to scale. If there are any important matters likely to affect your decision to buy, please contact us before viewing the property.