



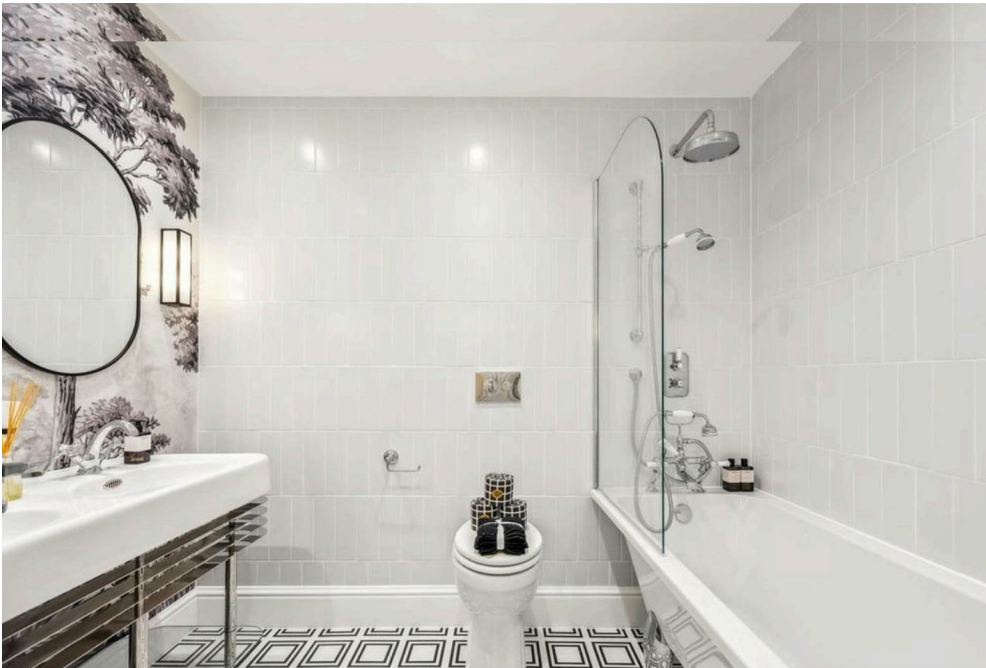
18, Grosvenor Square,  
Mayfair, W1K

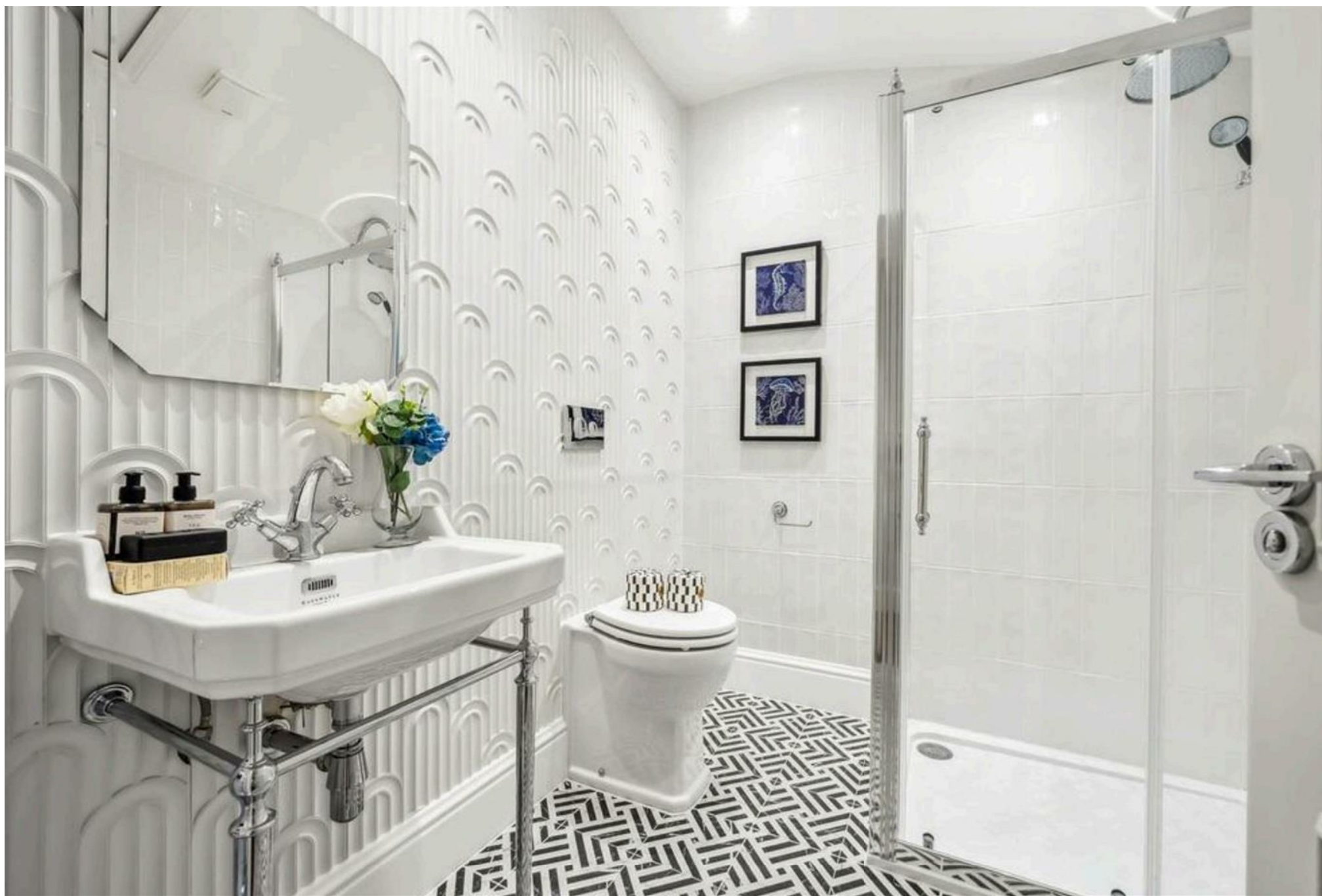
£7,500 Per Month,

NAPIER WATT

T: 0207 935 0011  
E: [enquiries@napierwatt.co.uk](mailto:enquiries@napierwatt.co.uk)  
W: [napierwatt.co.uk](http://napierwatt.co.uk)

35 Berkeley Square, Mayfair, London, W1J 5BF







## Description

A stunning two-bedroom, two-bathroom apartment located in a luxury mansion block with 24-hour porter service, ideally situated on the prestigious Grosvenor Square. Recently refurbished throughout, the apartment is offered fully furnished to an exceptionally high standard. Grosvenor Square is one of London's most prestigious addresses, located in the heart of Mayfair. The apartment offers easy access to top restaurants, hotels, and amenities, with Hyde Park to the west and Green Park to the south.

2 Bedrooms : 2 Bathrooms : Utility Room : Lift : 24-Hour Porter : Westminster Council Tax Band G : EPC Rating C

## Key Features

- 2 BEDROOMS
- 24 HOUR PORTER
- LIFT
- UTILITY ROOM

## Terms

Fees & Charges: Tenancies exceeding £100,000 Per annum £480 inc VAT, Tenancies where a company is a tenant £480 Inc VAT.



**IMPORTANT:** We would inform prospective purchasers that these sales particulars have been prepared as a general guide only. A detailed survey has not been carried out, nor the services, appliances and fittings tested. Room sizes should not be relied upon for furnishing purposes and are approximate. If floor plans are included, they are for guidance only and illustration purposes only and may not be to scale. If there are any important matters likely to affect your decision to buy, please contact us before viewing the property.