



One, Seymour Street,
Marylebone, W1H

Asking Price £3,250,000, Leasehold

NAPIER WATT

T: 0207 935 0011
E: enquiries@napierwatt.co.uk
W: napierwatt.co.uk

35 Berkeley Square, Mayfair, London, W1J 5BF







Description

A modern 3 bedroom, 2 bathroom apartment to rent in Marylebone W1. Situated in a new boutique development on Seymour Street with an impressive entrance lobby which has been interior designed by Taylor Howes. Located on the fourth floor with lift access, this apartment has high specification interiors throughout, 24 hour concierge and access to Portman Square gardens (fee payable) .

The Portman Estate and conveniently situated close to Oxford Street. Within minutes of Marylebone's Seymour Place, New Quebec Street and Chiltern Street as well as the vast open spaces of Hyde Park. One Seymour Street balances the 24 hour energy of Central London with the peace and serenity of an exclusive village.

3 Bedrooms : Shower Room : En Suite Bathroom : Reception Room : Kitchen : Porter : Lift : Air Conditioning :
24 Hour Concierge : Communal Gardens : EPC Rating B : Council Tax Westminster Band H

Key Features

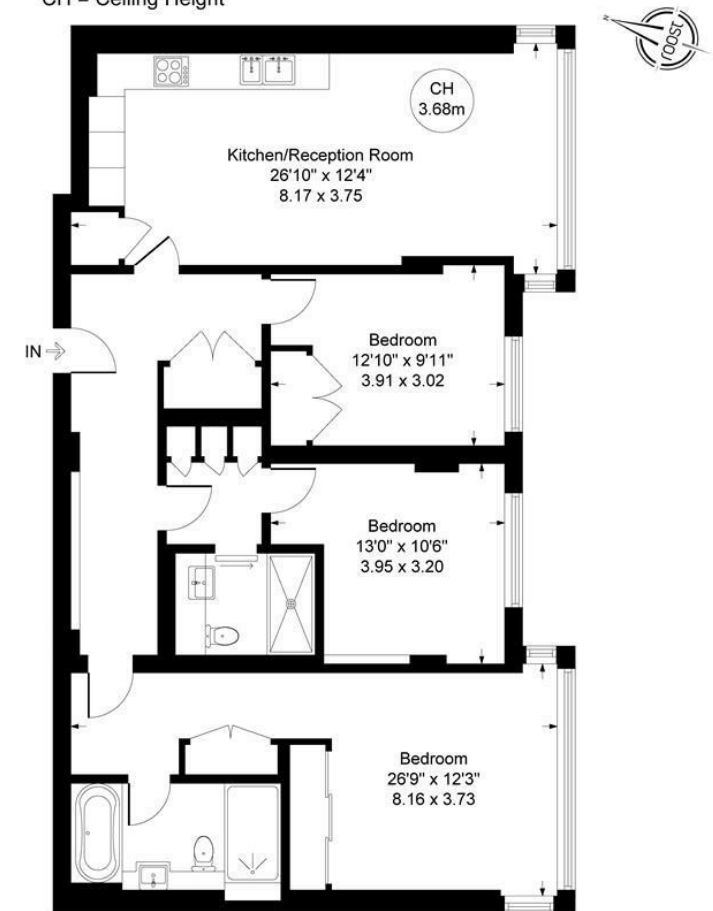
- LIFT ACCESS
- VIDEO ENTRY
- A/C
- 24 HOUR CONCIERGE
- CCTV

Terms

Leasehold: 118 Years Remaining.
Ground Rent : £800 pa
Service Charge £16,000 pa
EPC B
Council Tax Westminster Band H

Seymour Street, Marylebone W1H
Approximate Gross Internal Area = 1158 sq ft / 107.58 sq m

CH = Ceiling Height



Fourth Floor
Approximate Floor Area
1158 sq. ft
(107.58 sq. m)

Illustration for identification purposes only,
measurements are approximate, not to scale. (ID1398)

IMPORTANT: We would inform prospective purchasers that these sales particulars have been prepared as a general guide only. A detailed survey has not been carried out, nor the services, appliances and fittings tested. Room sizes should not be relied upon for furnishing purposes and are approximate. If floor plans are included, they are for guidance only and illustration purposes only and may not be to scale. If there are any important matters likely to affect your decision to buy, please contact us before viewing the property.