



, Montagu Mansions,
Marylebone, W1U

£6,000 Per Month,

NAPIER WATT

T: 0207 935 0011
E: enquiries@napierwatt.co.uk
W: napierwatt.co.uk

35 Berkeley Square, Mayfair, London, W1J 5BF







Description

A spacious, second floor mansion flat (with lift) in a period building with 24-hour portorage & CCTV. The accommodation boasts Bo Concept furnishings, high ceilings, large windows providing excellent natural light, two small balconies, wooden floors, communal heating & hot water (included in the rent) & comprises a double reception room, separate kitchen, two double bedrooms, two bathrooms and a small home office. Situated in the heart of Marylebone, moments from Baker Street, Marylebone High Street, Selfridges and all local amenities including a wide variety of fashionable restaurants and excellent transport links from Baker Street & Bond Street underground stations, many local bus routes and Marylebone overground. Available, furnished.

2 Bedrooms : 2 Bathrooms : 24-Hour Porter : Lift : EPC Rating C : Camden Council Band G

Key Features

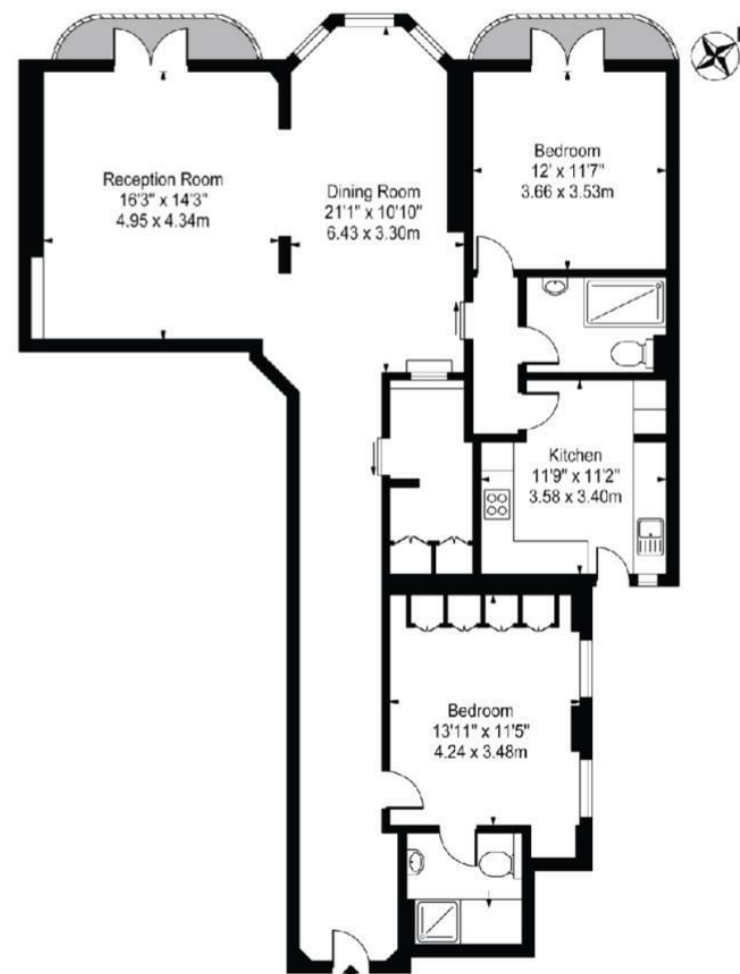
- 24-HOUR PORTER
- HIGH CEILINGS
- TWO BATHROOMS
- WOODEN FLOORS
- CCTV SECURITY
- TWO BEDROOMS
- CENTRAL MARYLEBONE
- LARGE WINDOWS

Terms

Fees & Charges: Tenancies exceeding £100,000 Per annum £480 inc VAT, Tenancies where a company is a tenant £480 Inc VAT.

Montagu Mansions

Approx. Gross Internal Area 1328 Sq Ft - 123.37 Sq M



Second Floor
For Illustration Purposes Only - Not To Scale

This floor plan should be used as a general outline for guidance only and does not constitute in whole or in part an offer or contract. Any intending purchaser or lessee should satisfy themselves by inspection, searches, enquiries and full survey as to the correctness of each statement. Any areas, measurements or distances quoted are approximate and should not be used to value a property or be the basis of any sale or let.

IMPORTANT: We would inform prospective purchasers that these sales particulars have been prepared as a general guide only. A detailed survey has not been carried out, nor the services, appliances and fittings tested. Room sizes should not be relied upon for furnishing purposes and are approximate. If floor plans are included, they are for guidance only and illustration purposes only and may not be to scale. If there are any important matters likely to affect your decision to buy, please contact us before viewing the property.