



Castleacre, Hyde Park Crescent,
Hyde Park Estate, W2

Asking Price £1,750,000, Leasehold - Share of Freehold

NAPIER WATT

T: 0207 935 0011
E: enquiries@napierwatt.co.uk
W: napierwatt.co.uk

35 Berkeley Square, Mayfair, London, W1J 5BF







Description

Located on the 8th floor of the prestigious Castleacre development, this spacious two-bedroom, two-bathroom apartment is a rare gem in the heart of London. Boasting a desirable west-facing aspect, the property is bathed in natural light and offers stunning open views—perfect for those seeking a bright and airy living space.

Castleacre is renowned for its exceptional 24-hour porter service. Nestled just moments from the serene green spaces of Hyde Park, this prime location also offers immediate access to the boutique shops, cafés, and restaurants of Connaught Village, as well as the world-class shopping of Oxford Street.

With an approximate 979-year lease, this apartment will be an ideal family home or investment opportunity.

Key Features

- SPACIOUS 2 BEDROOM FLAT
- PASSENGER LIFT
- BRIGHT AND AIRY
- 24 HOUR PORTERAGE
- 8TH FLOOR
- SHARE OF FREEHOLD

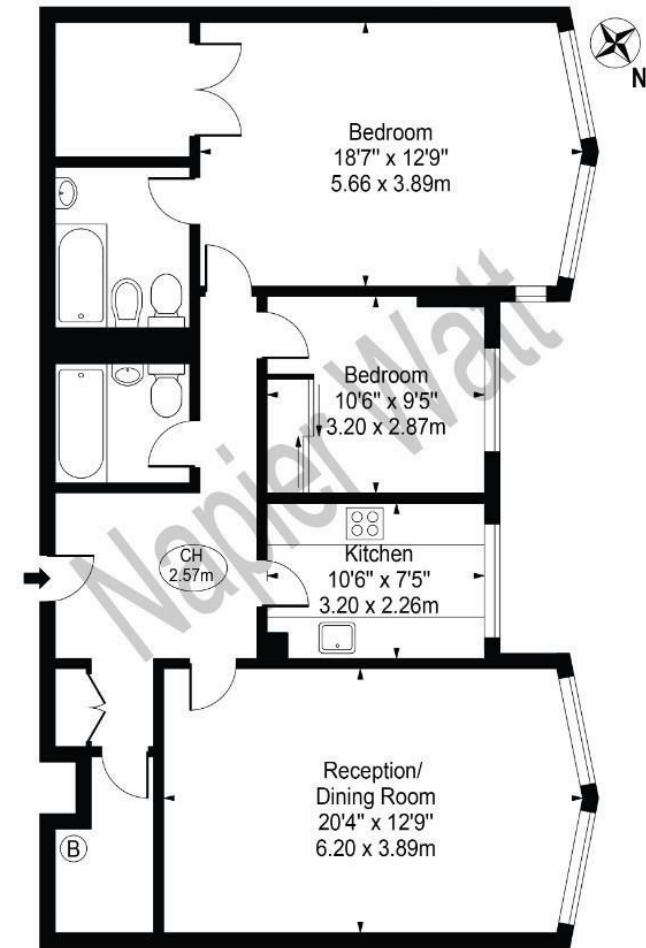
Terms

Share of Freehold and Leasehold 999 years from 25 March 2004 ie 979 year

Council Tax : Westminster band G

Castleacre

Approx. Gross Internal Area 1011 Sq Ft - 93.92 Sq M



Eighth Floor

For Illustration Purposes Only - Not To Scale

This floor plan should be used as a general outline for guidance only and does not constitute in whole or in part an offer or contract. Any intending purchaser or lessee should satisfy themselves by inspection, searches, enquiries and full survey as to the correctness of each statement. Any areas, measurements or distances quoted are approximate and should not be used to value a property or be the basis of any sale or let.

IMPORTANT: We would inform prospective purchasers that these sales particulars have been prepared as a general guide only. A detailed survey has not been carried out, nor the services, appliances and fittings tested. Room sizes should not be relied upon for furnishing purposes and are approximate. If floor plans are included, they are for guidance only and illustration purposes only and may not be to scale. If there are any important matters likely to affect your decision to buy, please contact us before viewing the property.