



The Triton Building, 20 Brock Street,
Regent's Place, NW1

£950 Per Week,

NAPIER WATT

T: 0207 935 0011
E: enquiries@napierwatt.co.uk
W: napierwatt.co.uk

35 Berkeley Square, Mayfair, London, W1J 5BF







Description

Stylish, modern apartment set in this desirable development with 24-hour concierge. Set on the 11th floor (with lift) and benefitting from plenty of natural light, the property of approximately 881sq ft also has a large balcony directly off the living room for residents to enjoy. The rest of the property comprising a master bedroom with en-suite bathroom, second double bedroom, separate shower room, spacious living room with a fully fitted, semi-open plan kitchen. Further benefits include a secure underground car park space, comfort cooling, large terrace and 24 hour concierge service. The building is conveniently located moments from the transport amenities of Warren Street and Euston and the open spaces of Regent's Park.

2 Bedrooms : 2 Bathrooms : 24-Hour Concierge : Lift : EPC Rating B : Camden Council Band F

Key Features

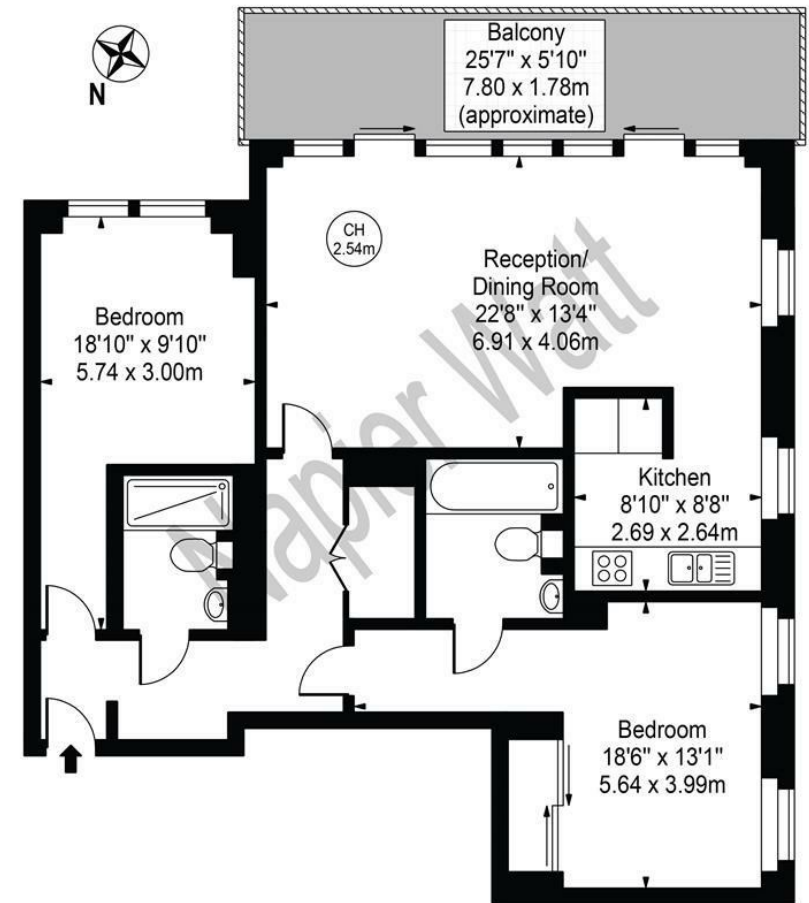
- 24-HOUR CONCIERGE
- AIR CONDITIONING
- UNDERGROUND CAR PARK SPACE
- GOOD LIGHT
- LIFTS
- BALCONY
- FURNISHED
- LONG LET

Terms

Fees & Charges: Tenancies exceeding £100,000 Per annum £480 Inc VAT, Tenancies where a company is a tenant £480 Inc VAT.

Triton Building

Approx. Gross Internal Area 881 Sq Ft - 81.85 Sq M



Eleventh Floor

For Illustration Purposes Only - Not To Scale

This floor plan should be used as a general outline for guidance only and does not constitute in whole or in part an offer or contract. Any intending purchaser or lessee should satisfy themselves by inspection, searches, enquiries and full survey as to the correctness of each statement. Any areas, measurements or distances quoted are approximate and should not be used to value a property or be the basis of any sale or let.

IMPORTANT: We would inform prospective purchasers that these sales particulars have been prepared as a general guide only. A detailed survey has not been carried out, nor the services, appliances and fittings tested. Room sizes should not be relied upon for furnishing purposes and are approximate. If floor plans are included, they are for guidance only and illustration purposes only and may not be to scale. If there are any important matters likely to affect your decision to buy, please contact us before viewing the property.