



10 Weymouth Street,  
, W1W

£1,400 Per Week,

NAPIER WATT

T: 0207 935 0011  
E: [enquiries@napierwatt.co.uk](mailto:enquiries@napierwatt.co.uk)  
W: [napierwatt.co.uk](http://napierwatt.co.uk)

35 Berkeley Square, Mayfair, London, W1J 5BF







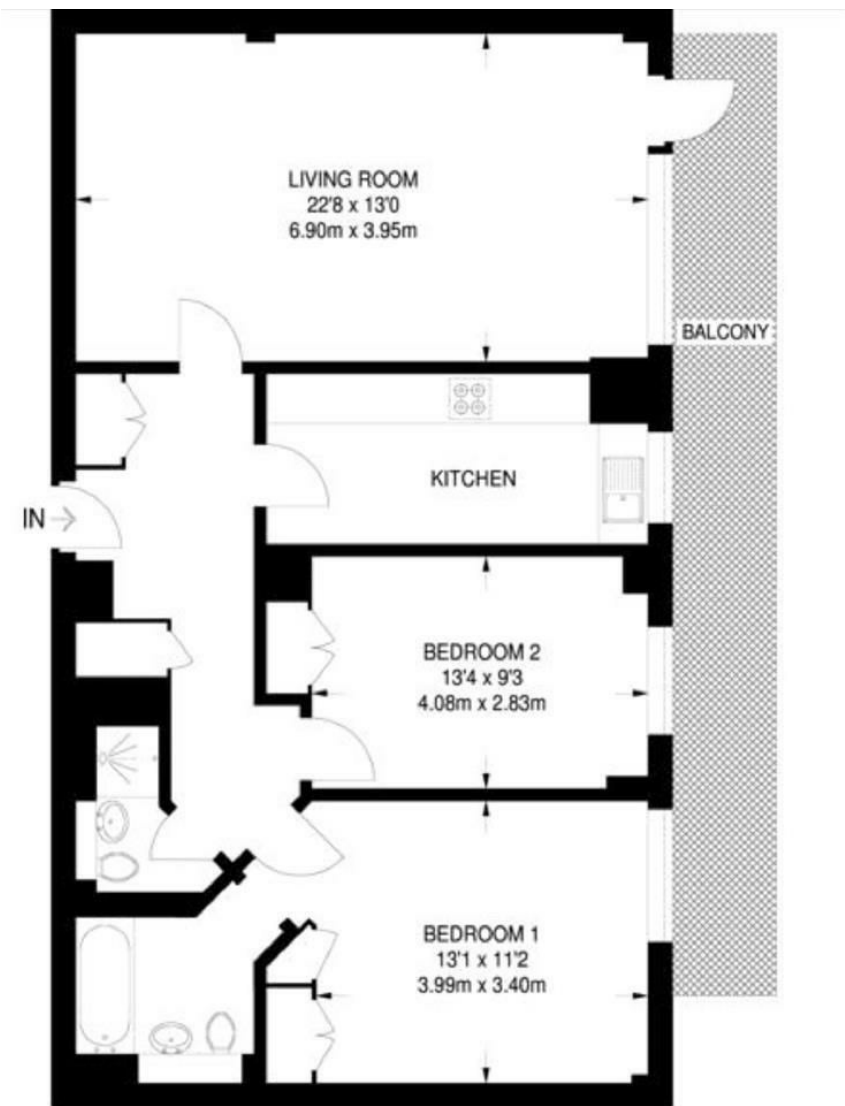
## Description

A fantastic 2 bedroom, 2 bathroom modern apartment in the heart of London in an impressive block designed by Make, Ken Shuttleworths renowned architecture practise. This fourth floor apartment has a lot to offer including 2 spacious bedrooms, open plan reception room, fully fitted contemporary kitchen and 2 bathrooms. These new apartments are beautifully decorated, furnished to a high standard and offer a balcony. The block also benefits from a lift and a porter. and is a 5 minute walk from London's Oxford Street which is full of the best designer shops and restaurants. Parking by negotiation.

## Key Features

## Terms

Additional costs will apply for; referencing (£36 per person & guarantor); administration (£240); renewal/extensions (£120); check-out inventory & cleaning (variable); special requests (variable). Security Deposits also apply to all tenancies.



**APPROXIMATE GROSS INTERNAL AREA**  
**936 SQ FT / 87.0 SQ M**

IMPORTANT: We would inform prospective purchasers that these sales particulars have been prepared as a general guide only. A detailed survey has not been carried out, nor the services, appliances and fittings tested. Room sizes should not be relied upon for furnishing purposes and are approximate. If floor plans are included, they are for guidance only and illustration purposes only and may not be to scale. If there are any important matters likely to affect your decision to buy, please contact us before viewing the property.