



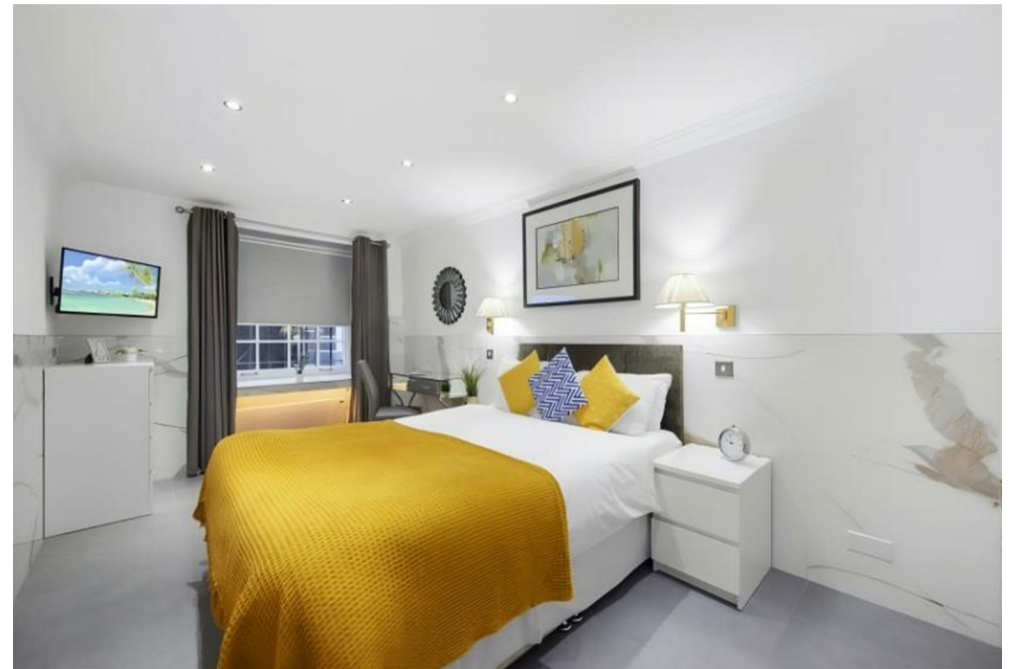
91 Gloucester Place,
Marylebone, W1U

£595 Per Week,

NAPIER WATT

T: 0207 935 0011
E: enquiries@napierwatt.co.uk
W: napierwatt.co.uk

35 Berkeley Square, Mayfair, London, W1J 5BF







Description

A furnished 1 bed apartment situated on the lower-ground floor of this superbly maintained residential apartment building located just a short distance from Baker Street Tube Station and the attractions of Oxford Street & Hyde Park. The apartment offers a good size open plan living area with porcelain tiled floors & under-floor heating, leather sofas, LCD TV with satellite feed and a feature fireplace, a superb open-plan kitchen area with integrated appliances, tiled floor and breakfast bar, a large double bedroom with fitted wardrobes and a fully tiled shower room with WC. The apartment has gas central heating and the building is equipped with CCTV for added security & ultra-fast Wi-Fi is available on request.

Key Features

- CCTV
- ENTRANCE PHONE

Terms

Fees & Charges: Tenancies exceeding £100,000 Per annum £480 inc VAT, Tenancies where a company is a tenant £480 Inc VAT.



IMPORTANT: We would inform prospective purchasers that these sales particulars have been prepared as a general guide only. A detailed survey has not been carried out, nor the services, appliances and fittings tested. Room sizes should not be relied upon for furnishing purposes and are approximate. If floor plans are included, they are for guidance only and illustration purposes only and may not be to scale. If there are any important matters likely to affect your decision to buy, please contact us before viewing the property.