



Strathmore Court 143 Park Road,
St Johns Wood, NW8

£860 Per Week,

NAPIER WATT

T: 0207 935 0011
E: enquiries@napierwatt.co.uk
W: napierwatt.co.uk

35 Berkeley Square, Mayfair, London, W1J 5BF







Description

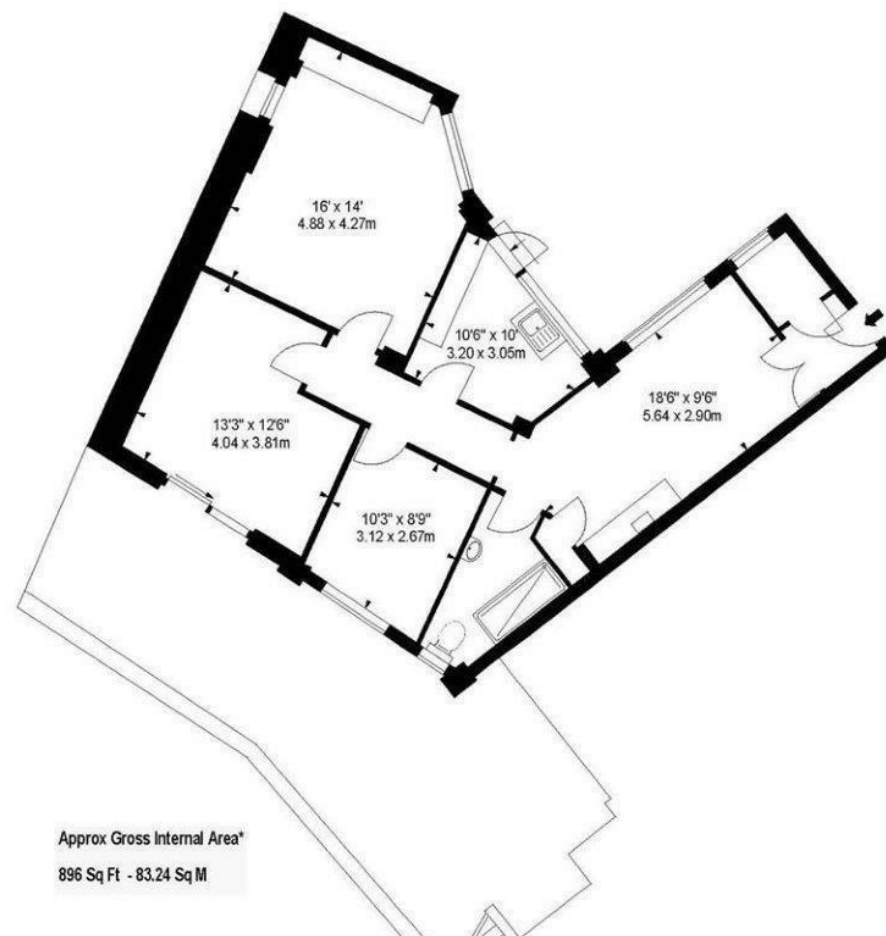
This superb ground floor two bedroom apartment with a large private garden is set within a ported building opposite the stunning Regents Park in St John's Wood. The apartment comprises a large master bedroom with another good sized double bedroom, a brand new bespoke kitchen, spacious reception room and a bright and open dining room. This apartment is ideally suited to young professionals or students due to its proximity to the West End, as well as a number of top colleges and universities such as the London Business School, University of Westminster and the Royal College of Physicians. Strathmore Court is located within a 10 minute walk from St John's Wood underground station (Jubilee Line) and Marylebone underground and overground station (Bakerloo and national railway). Lords Cricket Ground, along with the large variety of cafés, restaurants and boutique shops in St John's Wood are all easily accessible.

Key Features

- ON SITE PORTER
- CCTV
- 24 HOUR EMERGENCY SERVICE
- SUPERFAST BROADBAND
- LIFT SERVICE
- PET FRIENDLY
- PRIVATE PATIO GARDEN
- FLEXIBLE RENTAL TERMS

Terms

Fees & Charges: Tenancies exceeding £100,000 Per annum £480 inc VAT, Tenancies where a company is a tenant £480 Inc VAT.



IMPORTANT: We would inform prospective purchasers that these sales particulars have been prepared as a general guide only. A detailed survey has not been carried out, nor the services, appliances and fittings tested. Room sizes should not be relied upon for furnishing purposes and are approximate. If floor plans are included, they are for guidance only and illustration purposes only and may not be to scale. If there are any important matters likely to affect your decision to buy, please contact us before viewing the property.