



10 Weymouth Street,
Marylebone, W1W

£1,650 Per Week,

NAPIER WATT

T: 0207 935 0011
E: enquiries@napierwatt.co.uk
W: napierwatt.co.uk

35 Berkeley Square, Mayfair, London, W1J 5BF







Description

Available to let from November 2026 to June 2020 - located in an impressive building with 24 hour porter, lifts and balcony to the front.

Parking available £1,000 per quarter

Key Features

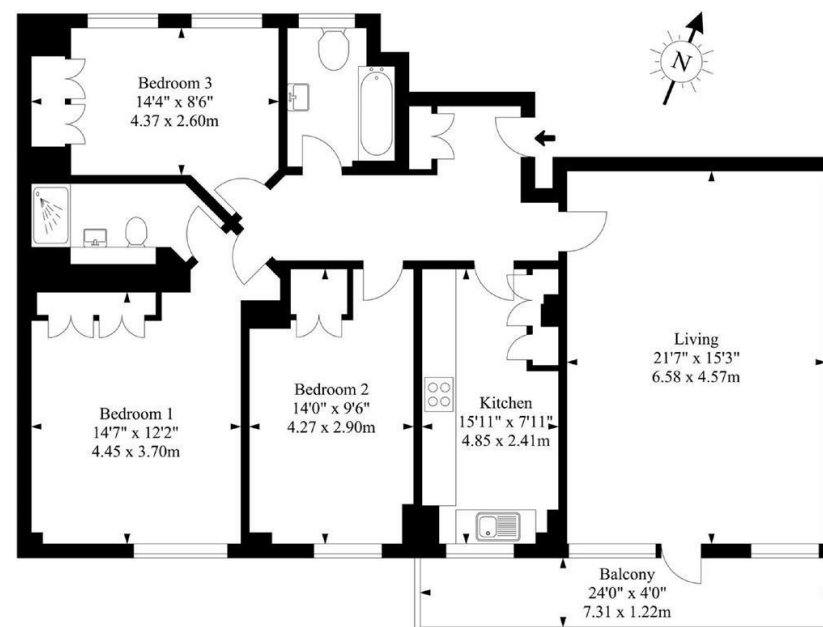
- LIFTS
- BALCONY
- GOOD CONDITION
- 24 HOUR PORTERAGE
- AVAILABLE NOVEMBER 2024 - JUNE 2025
- FURNISHED

Terms

Fees & Charges: Tenancies exceeding £100,000 Per annum £480 inc VAT, Tenancies where a company is a tenant £480 Inc VAT.

Weymouth Street

Approx. Gross Internal Area
1193.0 Ft² - 110.0 M²



Second Floor

Illustration For Identification Purposes Only. Not To Scale

IMPORTANT: We would inform prospective purchasers that these sales particulars have been prepared as a general guide only. A detailed survey has not been carried out, nor the services, appliances and fittings tested. Room sizes should not be relied upon for furnishing purposes and are approximate. If floor plans are included, they are for guidance only and illustration purposes only and may not be to scale. If there are any important matters likely to affect your decision to buy, please contact us before viewing the property.