



39, Hill Street,  
Mayfair, W1J

£630 Per Week,

NAPIER WATT

T: 0207 935 0011  
E: [enquiries@napierwatt.co.uk](mailto:enquiries@napierwatt.co.uk)  
W: [napierwatt.co.uk](http://napierwatt.co.uk)

35 Berkeley Square, Mayfair, London, W1J 5BF





## Description

A well proportioned studio apartment on the fourth floor of this beautiful red brick building, situated in the heart of London's fashionable Mayfair, neighboring the famous Berkeley Square. The apartment comprises a large living room area, modern bathroom and a unique kitchenette. Hill Street, benefits from spacious living accommodation, lift service, on-site building manager, and is nestled conveniently between two of London's parks Hyde Park and Green Park. Apartment benefits form great transport links including Green Park, Bond Street and Marble Arch stations - all within a short stroll away. Available, furnished.

Studio : Kitchenette : Porter : Heart of Mayfair : Westminster Council Tax Band E : EPC Rating C

## Key Features

- ON-SITE BUILDING MANAGER
- ACCESS TO A PRIVATE GATED COMMUNAL GARDEN
- REFURBISHED APARTMENT
- CCTV
- MAYFAIR LOCATION
- FURNISHED OR UNFURNISHED

## Terms

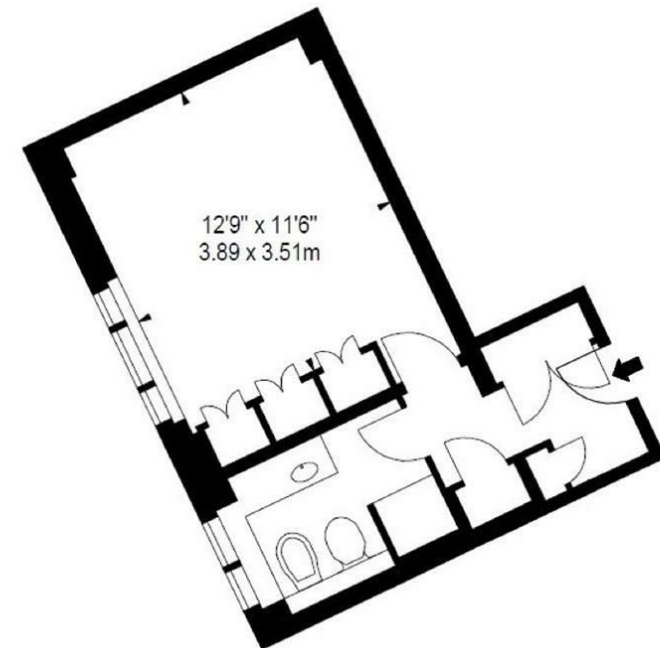
Fees & Charges: Tenancies exceeding £100,000 Per annum £480 inc VAT, Tenancies where a company is a tenant £480 Inc VAT.

APPROX. GROSS INTERNAL AREA \*

283 Ft<sup>2</sup> - 26.29 M<sup>2</sup>

ILLUSTRATION FOR IDENTIFICATION PURPOSES ONLY. NOT TO SCALE

\* As Defined by RICS - Code of Measuring Practice



FOURTH FLOOR

IMPORTANT: We would inform prospective purchasers that these sales particulars have been prepared as a general guide only. A detailed survey has not been carried out, nor the services, appliances and fittings tested. Room sizes should not be relied upon for furnishing purposes and are approximate. If floor plans are included, they are for guidance only and illustration purposes only and may not be to scale. If there are any important matters likely to affect your decision to buy, please contact us before viewing the property.