



24 Great Cumberland Place,  
Marylebone, W1H

£1,400 Per Week,

NAPIER WATT

T: 0207 935 0011  
E: [enquiries@napierwatt.co.uk](mailto:enquiries@napierwatt.co.uk)  
W: [napierwatt.co.uk](http://napierwatt.co.uk)

35 Berkeley Square, Mayfair, London, W1J 5BF











## Description

Situated on the 4th (top) floor is a 1152 sqft / 107sqm 3 double bedroom, 2 bathroom lateral apartment in this small purpose built block located in a charming crescent.

Benefiting from a long lease of approx 123 years, lift access and a non demised parking space, this extremely bright apartment also has a well-proportioned reception room with dual aspect. Convenient location for shopping, transport and leisure amenities of Oxford Street, Marble Arch tube stations and open spaces of Hyde Park.

Entrance Hall : Reception Room : Kitchen : 3 Bedrooms : Bathroom : Shower Room :  
 Parking Not Demised : Lift :

## Key Features

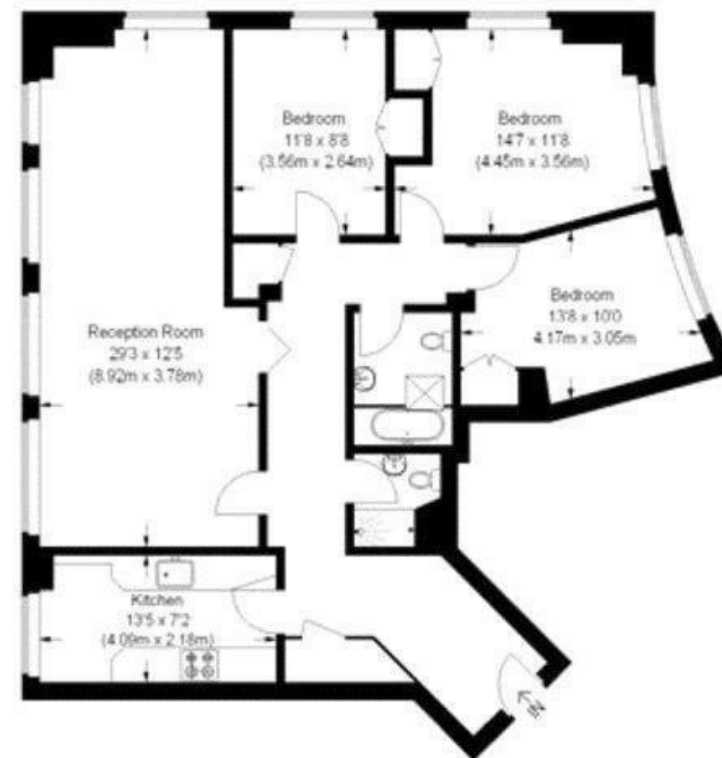
- TOP FLOOR
- NON DEMISED PARKING
- IN NEED OF UPDATING
- 200M FROM MARBLE ARCH
- PASSENGER LIFT
- LIFT
- DOUBLE GLAZED WINDOWS

## Terms

Fees & Charges: Tenancies exceeding £100,000 Per annum £480 inc VAT, Tenancies where a company is a tenant £480 Inc VAT.

## Great Cumberland Place, W1

Approximate Gross Internal Area  
 1152 sq ft / 107 sq m



Fourth Floor = 1152 sq ft / 107 sq m

IMPORTANT: We would inform prospective purchasers that these sales particulars have been prepared as a general guide only. A detailed survey has not been carried out, nor the services, appliances and fittings tested. Room sizes should not be relied upon for furnishing purposes and are approximate. If floor plans are included, they are for guidance only and illustration purposes only and may not be to scale. If there are any important matters likely to affect your decision to buy, please contact us before viewing the property.