



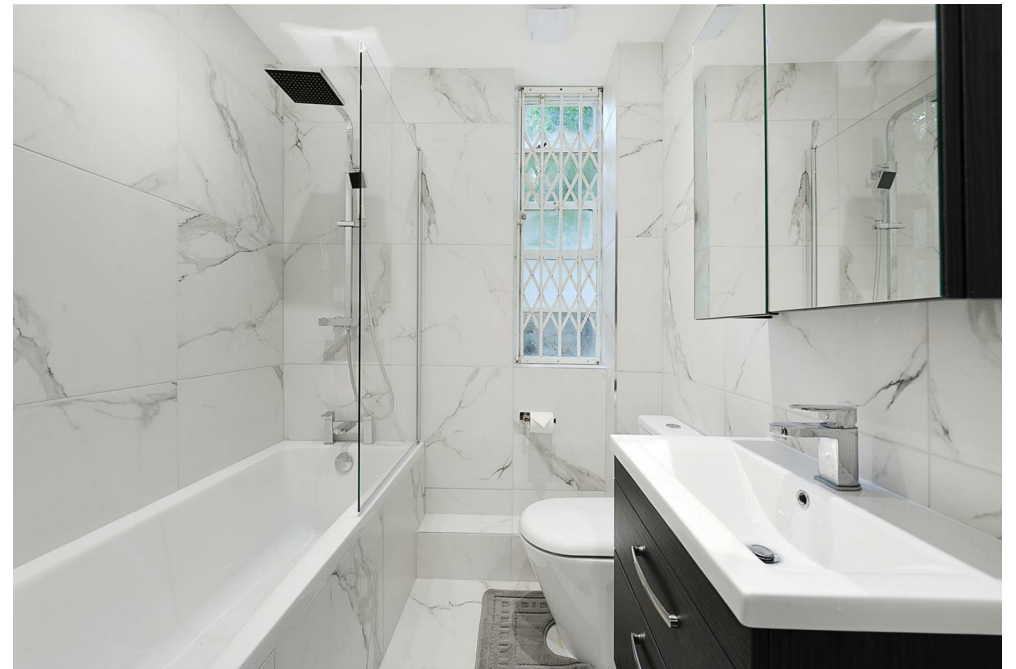
Albion Gate Albion Street,  
Hyde Park, W2

£1,153 Per Week,

NAPIER WATT

T: 0207 935 0011  
E: [enquiries@napierwatt.co.uk](mailto:enquiries@napierwatt.co.uk)  
W: [napierwatt.co.uk](http://napierwatt.co.uk)

35 Berkeley Square, Mayfair, London, W1J 5BF







## Description

Napier Watt are delighted to offer this newly redecorated three-bedroom apartment set within the lovely Albion Gate. Located on Albion Street, opposite Hyde Park, this highly sought-after building benefits from a 24-hour porter. The apartment itself boasts wooden flooring throughout and comprises a living room, dining area, modern fitted kitchen, three double bedrooms, two bathrooms and a guest cloakroom. First and second year students are not permitted to reside in the building. The imposing purpose-built block is set within Connaught village and is a moments' walk from Marble Arch Underground Station.

Available now, furnished.

3 Bedrooms : 2 Bathrooms : Guest W.C. : 24-Hour Porter : Westminster City Council Tax Band H : EPC Rating E

## Key Features

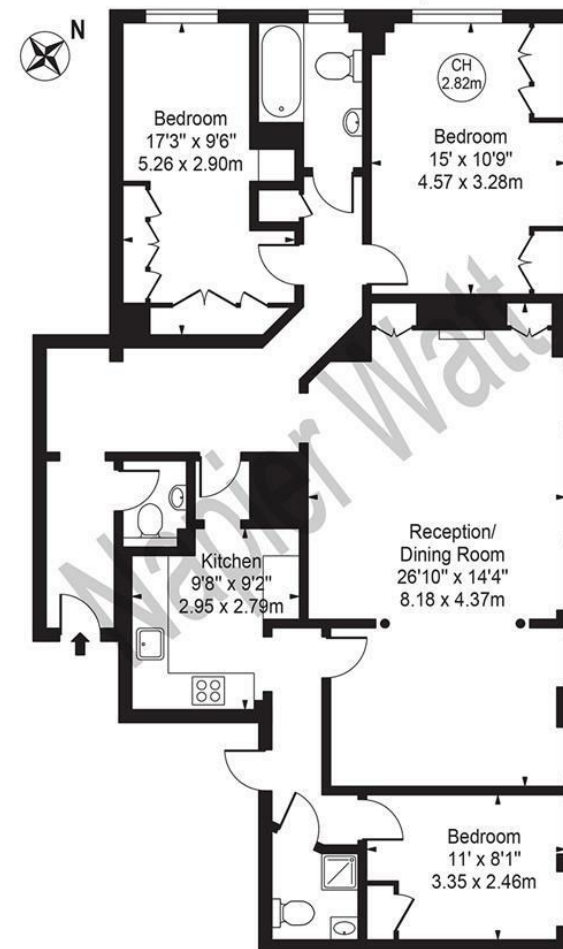
- FURNISHED
- OPPOSITE HYDE PARK
- CONNAUGHT VILLAGE
- 24-HOUR PORTER
- INCLUDES SOME HEATING AND HOT WATER
- GROUND FLOOR

## Terms

Fees & Charges: Tenancies exceeding £100,000 Per annum £480 inc VAT, Tenancies where a company is a tenant £480 Inc VAT.

## Albion Gate

Approx. Gross Internal Area 1214 Sq Ft - 112.78 Sq M



### Ground Floor

For Illustration Purposes Only - Not To Scale

This floor plan should be used as a general outline for guidance only and does not constitute in whole or in part an offer or contract. Any intending purchaser or lessee should satisfy themselves by inspection, searches, enquiries and full survey as to the correctness of each statement. Any areas, measurements or distances quoted are approximate and should not be used to value a property or be the basis of any sale or let.

IMPORTANT: We would inform prospective purchasers that these sales particulars have been prepared as a general guide only. A detailed survey has not been carried out, nor the services, appliances and fittings tested. Room sizes should not be relied upon for furnishing purposes and are approximate. If floor plans are included, they are for guidance only and illustration purposes only and may not be to scale. If there are any important matters likely to affect your decision to buy, please contact us before viewing the property.