



4B Merchant Square,
Paddington, W2

£1,695 Per Week,

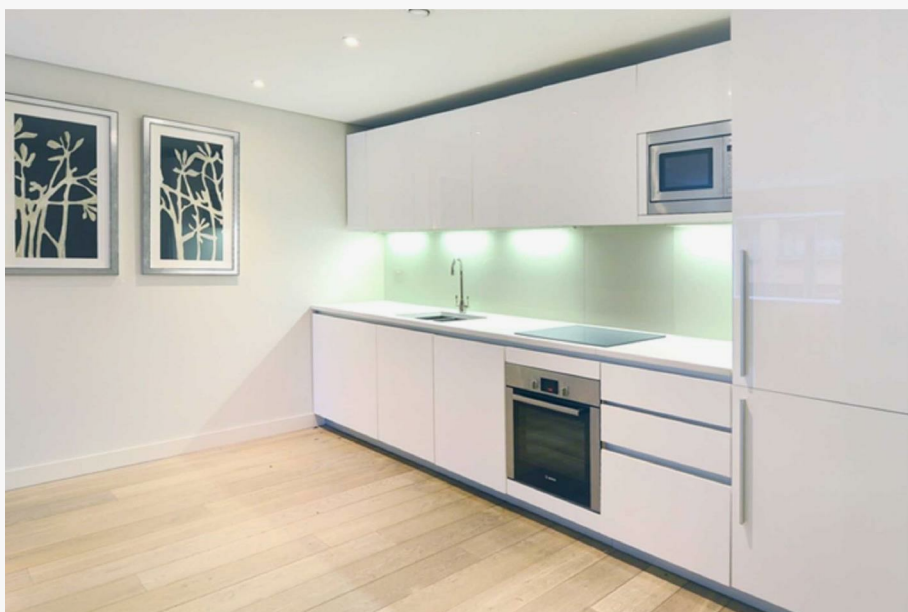
NAPIER WATT

T: 0207 935 0011
E: enquiries@napierwatt.co.uk
W: napierwatt.co.uk

35 Berkeley Square, Mayfair, London, W1J 5BF







Description

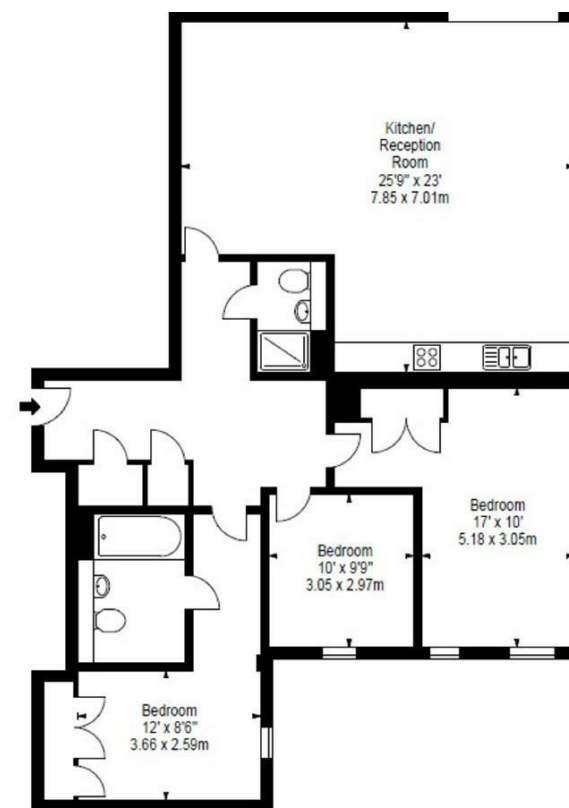
This bright and elegant apartment comprises spacious living (1341 sq ft/124.58 sqm) and entertaining space with a beautiful reception/dining room with stunning views overlooking the canal, a superb modern fitted open plan kitchen, three bedrooms, a family bathroom, guest cloakroom, and ample storage space situated on the first floor. Building features include 24 hour concierge, lift service, and secure underground parking. The managing agents also offer exclusive deals and discounts in local restaurants and gyms specifically to 4B Merchant square tenants. Living in this building offers easy access to superb transport links such as Paddington Train Station (Bakerloo, Hammersmith & City, Circle, District lines and Heathrow) Edgware Road (Circle, District and Bakerloo lines).

Key Features

- CANAL VIEWS
- PET FRIENDLY
- SUPERFAST BROADBAND
- CONCIERGE SERVICE
- UNDERGROUND PARKING
- 24 HOUR EMERGENCY HELPLINE & SERVICE

Terms

Fees & Charges: Tenancies exceeding £100,000 Per annum £480 inc VAT, Tenancies where a company is a tenant £480 Inc VAT.



FLAT 109
4B MERCHANT SQUARE EAST
LONDON W2

First Floor

Approx Gross Internal Area*

1341 Sq Ft - 124.58 Sq M

IMPORTANT: We would inform prospective purchasers that these sales particulars have been prepared as a general guide only. A detailed survey has not been carried out, nor the services, appliances and fittings tested. Room sizes should not be relied upon for furnishing purposes and are approximate. If floor plans are included, they are for guidance only and illustration purposes only and may not be to scale. If there are any important matters likely to affect your decision to buy, please contact us before viewing the property.