



15, Portman Square,  
Marylebone, W1H

£1,895 Per Week,

NAPIER WATT

T: 0207 935 0011  
E: [enquiries@napierwatt.co.uk](mailto:enquiries@napierwatt.co.uk)  
W: [napierwatt.co.uk](http://napierwatt.co.uk)

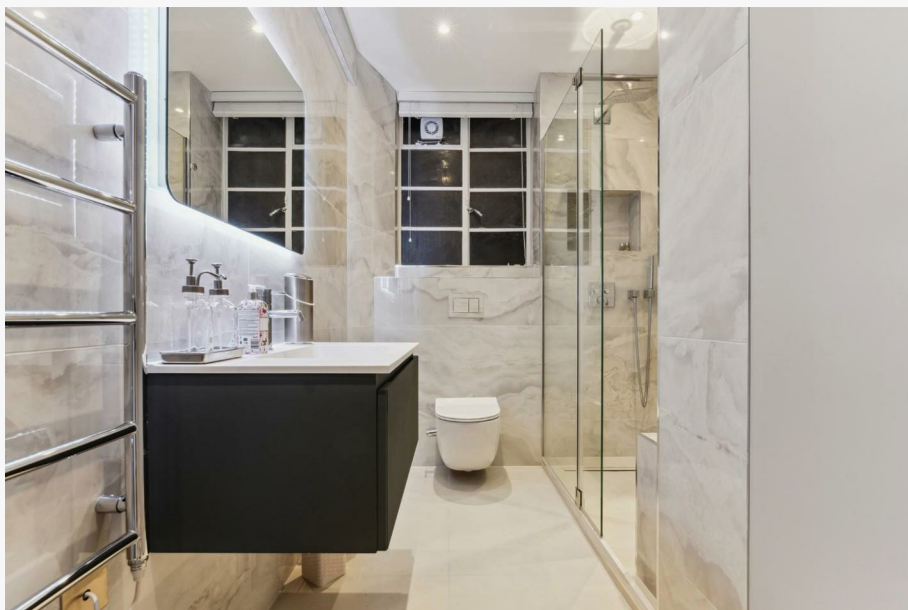
35 Berkeley Square, Mayfair, London, W1J 5BF











## Description

Newly refurbished and well-designed three-bedroom, lateral apartment in this sought-after purpose built block with lifts, 24-hour porter and recently decorated central lobby. Set on the first floor, the accommodation (1,127sq ft/105 sqm) comprises three double bedrooms, two of which have ensuite bathrooms, a separate family bathroom, spacious living room with dining area and a newly installed separate kitchen. The apartment benefits from wooden flooring throughout along with communal hot water and partial heating. Access to Portman Square communal garden can also be arranged, subject to the annual fee. Portman Square is ideally located just off Baker Street, with Oxford Street around the corner and there are fantastic transport links close by.

Available, furnished.

3 Bedrooms : 3 Bathroom : 24-Hour Porter : Lifts : AC : Wooden Flooring : Westminster Council Tax Band G : EPC Rating C

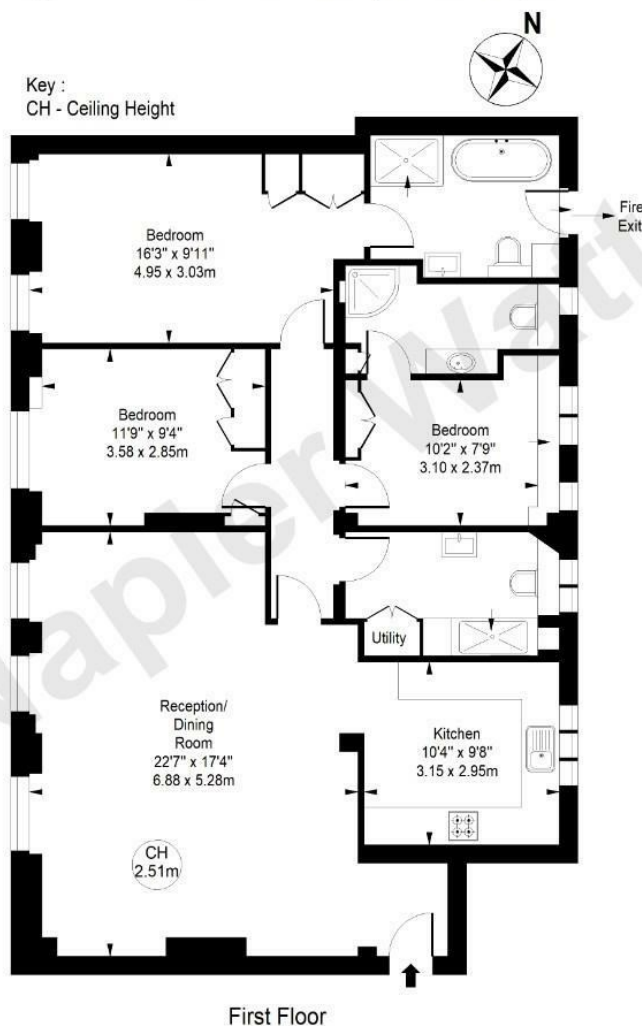
## Key Features

- NEWLY REFURBISHED
- LIFTS
- WOODEN FLOORING
- LATERAL
- 24-HOUR PORTER
- AIR-CONDITIONING
- SEPARATE KITCHEN

## Terms

Fees & Charges: Tenancies exceeding £100,000 Per annum £480 inc VAT, Tenancies where a company is a tenant £480 Inc VAT.

Portman Square, W1H  
Approx. Gross internal Area 1154 Sq Ft - 107.21 Sq M



Not to scale, for guidance only and must not be relied upon as a statement of fact.  
All measurements and areas are approximate only

IMPORTANT: We would inform prospective purchasers that these sales particulars have been prepared as a general guide only. A detailed survey has not been carried out, nor the services, appliances and fittings tested. Room sizes should not be relied upon for furnishing purposes and are approximate. If floor plans are included, they are for guidance only and illustration purposes only and may not be to scale. If there are any important matters likely to affect your decision to buy, please contact us before viewing the property.