



138 Park Lane,  
Mayfair, W1K

£1,850 Per Week,

NAPIER WATT

T: 0207 935 0011  
E: [enquiries@napierwatt.co.uk](mailto:enquiries@napierwatt.co.uk)  
W: [napierwatt.co.uk](http://napierwatt.co.uk)

35 Berkeley Square, Mayfair, London, W1J 5BF





## Description

A stunning two-bedroom apartment with stunning views over Hyde Park. The property is located on the second floor (with lift) of this Stucco-fronted Grade II listed period building meticulously designed to accentuate light and space. With a spacious layout, the internal floor of 1,184sq.ft /110sq.m. comprises an entrance vestibule, open plan living room with a modern fitted kitchen, two double bedrooms, one with en-suite and a small balcony. The property is located on the corner of Park Lane opposite the Marriott Hotel, offering easy access to Hyde Park, Marble Arch tube station as well and the entertainment and amenities of the West End. Available, furnished.

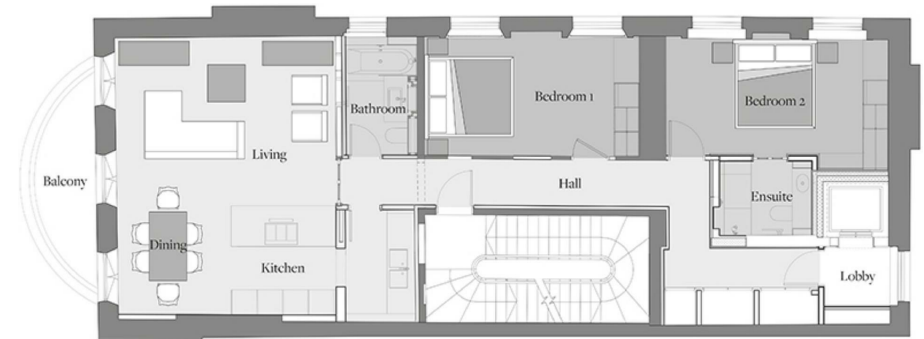
2 Bedrooms : 2 Bathrooms : Balcony : Direct Lift Access : AC : Park Views : Westminster Council Tax Band H : EPC Rating C

## Key Features

- OPPOSITE HYDE PARK
- DIRECT LIFT ACCESS
- AIR CONDITIONING
- 100M OXFORD STREET
- BALCONY
- HIGH CEILINGS
- 100m TO UNDER GROUND

## Terms

Fees & Charges: Tenancies exceeding £100,000 Per annum £480 inc VAT, Tenancies where a company is a tenant £480 Inc VAT.



IMPORTANT: We would inform prospective purchasers that these sales particulars have been prepared as a general guide only. A detailed survey has not been carried out, nor the services, appliances and fittings tested. Room sizes should not be relied upon for furnishing purposes and are approximate. If floor plans are included, they are for guidance only and illustration purposes only and may not be to scale. If there are any important matters likely to affect your decision to buy, please contact us before viewing the property.