



Cumberland Mansions,
George Street, W1H

£1,385 Per Week,

NAPIER WATT

T: 0207 935 0011
E: enquiries@napierwatt.co.uk
W: napierwatt.co.uk

35 Berkeley Square, Mayfair, London, W1J 5BF







Description

This charming apartment oozes character with bay windows, high ceiling and period features throughout. This unfurnished property has been recently redecorated and has a new kitchen and bathroom. The lateral accommodation of 1,240sq ft comprises an entrance hall, two large bedrooms with built-in storage, each with access to a Jack and Jill en-suite bathroom, third bedroom or office, marble bathroom, modern kitchen and a large reception room with bay windows, providing excellent entertaining space. Cumberland Mansions is a traditional red-brick mansion block benefitting from its own resident porter and is located at the western end of George Street. The property is ideally located for all the boutique shops and restaurants of both Marylebone and Mayfair and the green open spaces of Regent's Park and Hyde Park. Available, unfurnished.

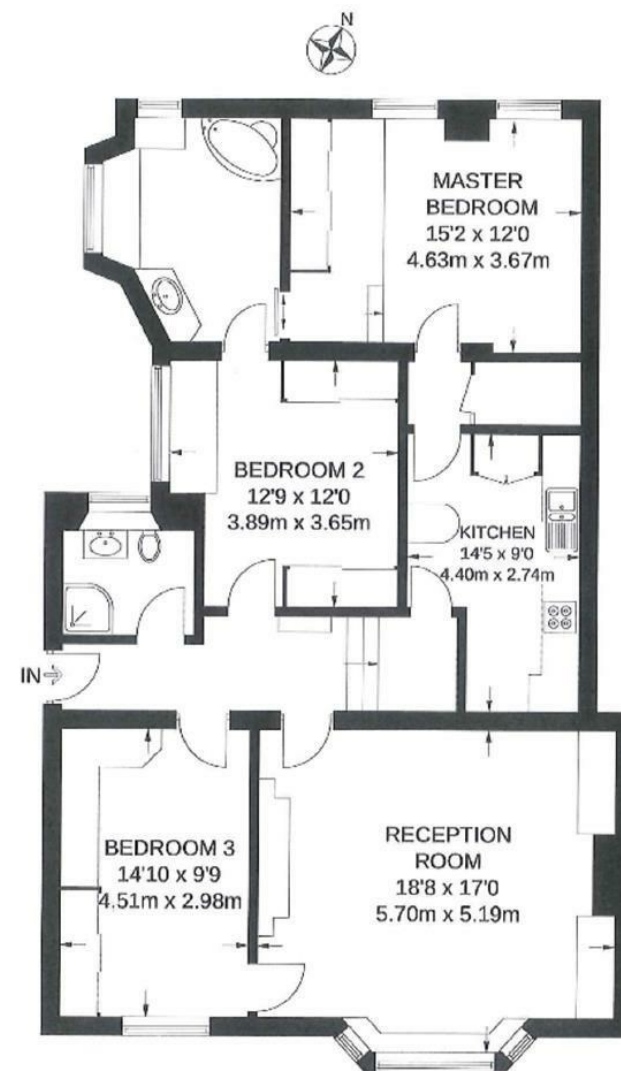
3 Bedrooms : 2 Bathrooms : Westminster Council Tax Band G : EPC Rating G

Key Features

- DAY PORTER
- MODERN FITTED KITCHEN
- WELL MAINTAINED BUILDING
- PERIOD FEATURES
- HIGH CEILINGS
- EASY ACCESS TO MARBLE ARCH

Terms

Fees & Charges: Tenancies exceeding £100,000 Per annum £480 inc VAT, Tenancies where a company is a tenant £480 Inc VAT.



RAISED GROUND FLOOR

APPROXIMATE GROSS INTERNAL AREA
1240 SQ FT / 115.2 SQ M

IMPORTANT: We would inform prospective purchasers that these sales particulars have been prepared as a general guide only. A detailed survey has not been carried out, nor the services, appliances and fittings tested. Room sizes should not be relied upon for furnishing purposes and are approximate. If floor plans are included, they are for guidance only and illustration purposes only and may not be to scale. If there are any important matters likely to affect your decision to buy, please contact us before viewing the property.