



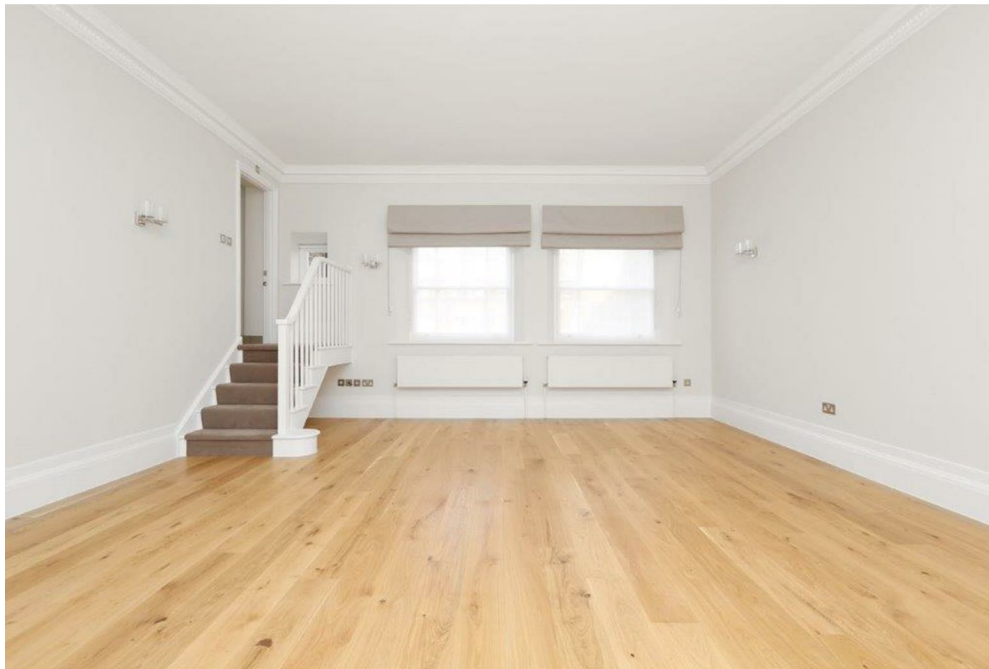
Bryanston Square,
Marylebone, W1H

£5,500 Per Week,

NAPIER WATT

T: 0207 935 0011
E: enquiries@napierwatt.co.uk
W: napierwatt.co.uk

35 Berkeley Square, Mayfair, London, W1J 5BF







Description

This family residence extends to almost 4,000 sq ft over three floors. It features a grand first-floor drawing room, a luxury fitted kitchen, and a dining room. The master bedroom suite is complemented by three additional large double bedrooms, each with en-suite bathrooms. An extra double bedroom with a shower room is situated off the utility room, making it ideal for staff. There is also a separate study room, in addition to the five bedrooms offered.

The property includes a secure lock-up garage and provides access to the private gardens of Bryanston Square, which the property overlooks. It is available on an unfurnished basis, with an option to furnish by separate negotiation and contract. This residence combines elegance and functionality, offering a luxurious lifestyle in a prime location.

5 Bedrooms : 5 Bathrooms : 1 Guest WCs : Access To Private Square : Terrace : Westminster Council Tax Band H : EPC Rating C

Key Features

- MAISONETTE
- ACCESS TO CUMUNAL GARDEN SQUARE

Terms

Fees & Charges: Tenancies exceeding £100,000 Per annum £480 inc VAT, Tenancies where a company is a tenant £480 Inc VAT.



IMPORTANT: We would inform prospective purchasers that these sales particulars have been prepared as a general guide only. A detailed survey has not been carried out, nor the services, appliances and fittings tested. Room sizes should not be relied upon for furnishing purposes and are approximate. If floor plans are included, they are for guidance only and illustration purposes only and may not be to scale. If there are any important matters likely to affect your decision to buy, please contact us before viewing the property.