



39 Hill Street,
Mayfair, W1J

£1,150 Per Week,

NAPIER WATT

T: 0207 935 0011
E: enquiries@napierwatt.co.uk
W: napierwatt.co.uk

35 Berkeley Square, Mayfair, London, W1J 5BF







Description

A bright and spacious, modern two bedroom seventh floor apartment located on one of Mayfair's most prestigious roads is now available to rent. It offers a large double bedroom, modern fitted bathroom, spacious reception room, modern fitted kitchen and ample storage space and access to a private gated communal garden. 39 Hill Street, benefits from spacious living accommodation, on-site building manager, and is nestled conveniently between Hyde Park and Green Park. Bond Street, Green Park and Marble Arch Stations are all within a short stroll away.

2 Bedroom : 1 Bathroom : Porter : Lift : EPC rating C : Council tax band E

Key Features

- LIFT SERVICE
- COMMUNAL GARDEN
- DEDICATED BUILDING MANAGER
- PET FRIENDLY
- CCTV
- AVAILABLE FURNISHED OR UNFURNISHED
- SUPERFAST BROADBAND

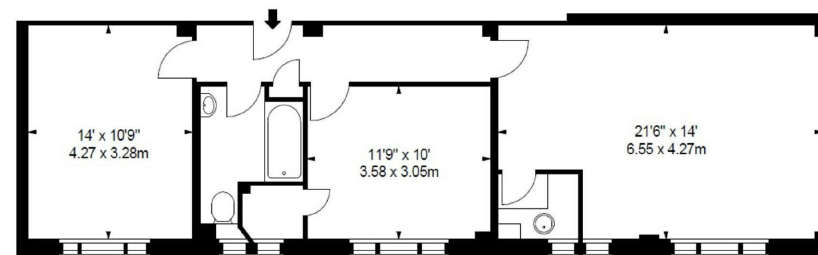
Terms

Additional costs will apply for; referencing (£36 per person & guarantor); administration (£240); renewal/extensions (£120); check-out inventory & cleaning (variable); special requests (variable). Security Deposits also apply to all tenancies.

FLAT 75, 39 HILL STREET, W1

APPROX. GROSS INTERNAL AREA *
728 Ft² - 67.63 M²

ILLUSTRATION FOR IDENTIFICATION PURPOSES ONLY. NOT TO SCALE
* As Defined by RICS - Code of Measuring Practice



SEVENTH FLOOR

IMPORTANT: We would inform prospective purchasers that these sales particulars have been prepared as a general guide only. A detailed survey has not been carried out, nor the services, appliances and fittings tested. Room sizes should not be relied upon for furnishing purposes and are approximate. If floor plans are included, they are for guidance only and illustration purposes only and may not be to scale. If there are any important matters likely to affect your decision to buy, please contact us before viewing the property.