



15 Portman Square,
Marylebone, W1H

£650 Per Week,

NAPIER WATT

T: 0207 935 0011
E: enquiries@napierwatt.co.uk
W: napierwatt.co.uk

35 Berkeley Square, Mayfair, London, W1J 5BF







Description

Napier Watt are delighted to offer this refurbished, bright, spacious one-bedroom apartment located in the sought-after block, 15 Portman Square. The property benefits from a separate kitchen, double bedroom with en-suite, large living room and a bathroom. The building includes heating and hot water as well as 24-hour concierge, whilst sitting opposite the beautiful Portman Square. For a small membership fee, residents can reserve the tennis court in the square. The building is a stone's throw from all the amenities of Oxford Street and Bond Street.

Available for Immediate occupation.

1 Bedroom : 2 Bathrooms : 24-Hour Porter : Westminster Council Tax Band F : EPC Rating D

Key Features

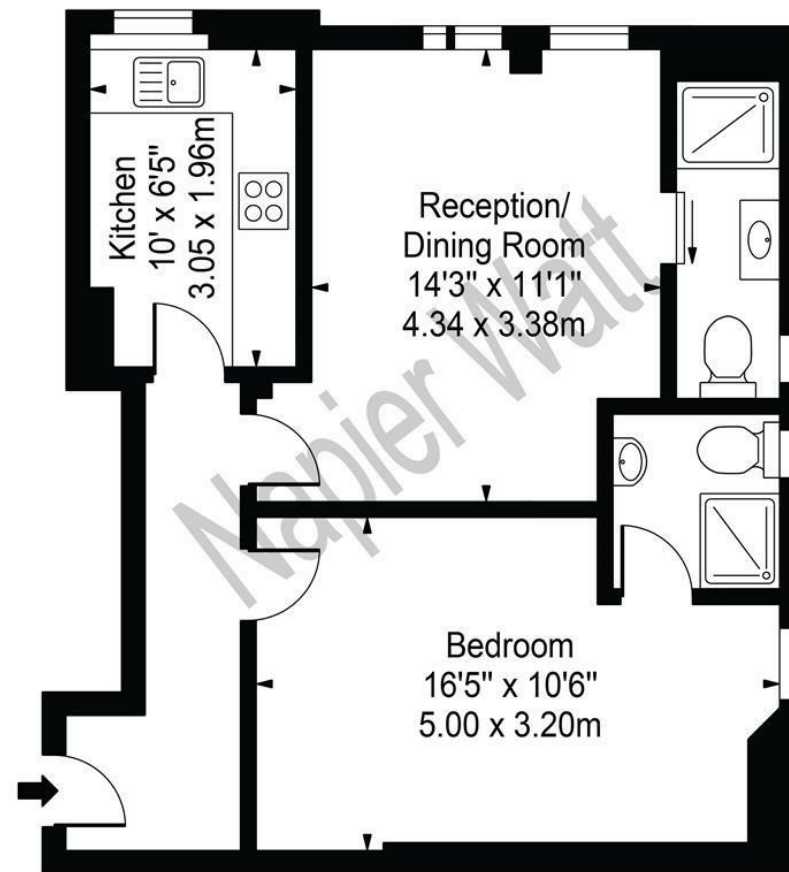
- PORTMAN SQUARE
- NEAR OXFORD STREET
- GARDEN SQUARE
- REFURBISHED
- 1 BED
- SELFRIDGES
- HEATING AND HOT WATER INCLUDED

Terms

Fees & Charges: Tenancies exceeding £100,000 Per annum £480 inc VAT, Tenancies where a company is a tenant £480 Inc VAT.

Portman Square

Approx. Gross Internal Area 521 Sq Ft - 48.40 Sq M 



Lower Ground Floor

For Illustration Purposes Only - Not To Scale

This floor plan should be used as a general outline for guidance only and does not constitute in whole or in part an offer or contract. Any intending purchaser or lessee should satisfy themselves by inspection, searches, enquiries and full survey as to the correctness of each statement. Any areas, measurements or distances quoted are approximate and should not be used to value a property or be the basis of any sale or let.

IMPORTANT: We would inform prospective purchasers that these sales particulars have been prepared as a general guide only. A detailed survey has not been carried out, nor the services, appliances and fittings tested. Room sizes should not be relied upon for furnishing purposes and are approximate. If floor plans are included, they are for guidance only and illustration purposes only and may not be to scale. If there are any important matters likely to affect your decision to buy, please contact us before viewing the property.