



Carrara Tower, City Road, London EC1V

£1,095 Per Week,

NAPIER WATT

T: 0207 935 0011

E: enquiries@napierwatt.co.uk

W: napierwatt.co.uk

35 Berkeley Square, Mayfair, London, W1J 5BF



Description

Modern two-bedroom apartment on the eleventh floor of this landmark development designed by world renowned architects Foster & Partners. The apartment is finished to a superb specification, alongside 5* facilities. The property comprises an open plan living room kitchen which leads to a winter garden with fantastic views across London, two double bedrooms with built-in storage and en-suite bathrooms. Carrara Towers has an indoor swimming pool, gym, outdoor yoga and spa facilities. The landlord is willing to purchase new furniture for the apartment (separately negotiable). Images of furnishing are CGI and are for illustrative purposes.

Available now.

2 Bedrooms : 2 Bathroom : Lift : 24-Concierge : Swimming Pool : Gym : Spa Facilities : Islington Council Tax Band G : EPC Rating B

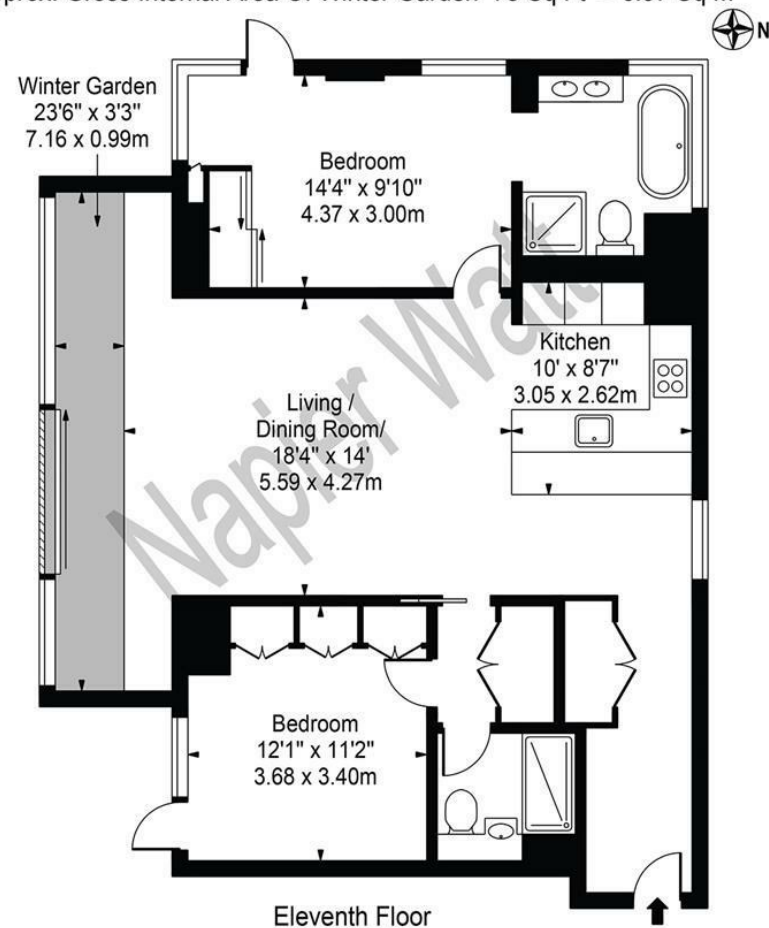
Key Features

- 24 HOUR CONCIERGE
- COMFORT COOLING
- OUTSTANDING VIEWS
- GYNASIUM

Terms

Fees & Charges: Tenancies exceeding £100,000 Per annum £480 inc VAT, Tenancies where a company is a tenant £480 Inc VAT.

Carrara Tower
 Approx. Total Internal Area 1039 Sq Ft - 96.53 Sq M
 (Including Winter Garden)
 Approx. Gross Internal Area Of Winter Garden 75 Sq Ft - 6.97 Sq M



Eleventh Floor
 For Illustration Purposes Only - Not To Scale

This floor plan should be used as a general outline for guidance only and does not constitute in whole or in part an offer or contract. Any intending purchaser or lessee should satisfy themselves by inspection, searches, enquiries and full survey as to the correctness of each statement. Any areas, measurements or distances quoted are approximate and should not be used to value a property or be the basis of any sale or let.

IMPORTANT: We would inform prospective purchasers that these sales particulars have been prepared as a general guide only. A detailed survey has not been carried out, nor the services, appliances and fittings tested. Room sizes should not be relied upon for furnishing purposes and are approximate. If floor plans are included, they are for guidance only and illustration purposes only and may not be to scale. If there are any important matters likely to affect your decision to buy, please contact us before viewing the property.