



Carrara Towers 1 Bollinder Place,
, EC1V

£1,175 Per Week,

NAPIER WATT

T: 0207 935 0011

E: enquiries@napierwatt.co.uk

W: napierwatt.co.uk

35 Berkeley Square, Mayfair, London, W1J 5BF







Description

Two bedroom apartment on the eleventh floor of this landmark development designed by world renowned architects Foster & Partners.

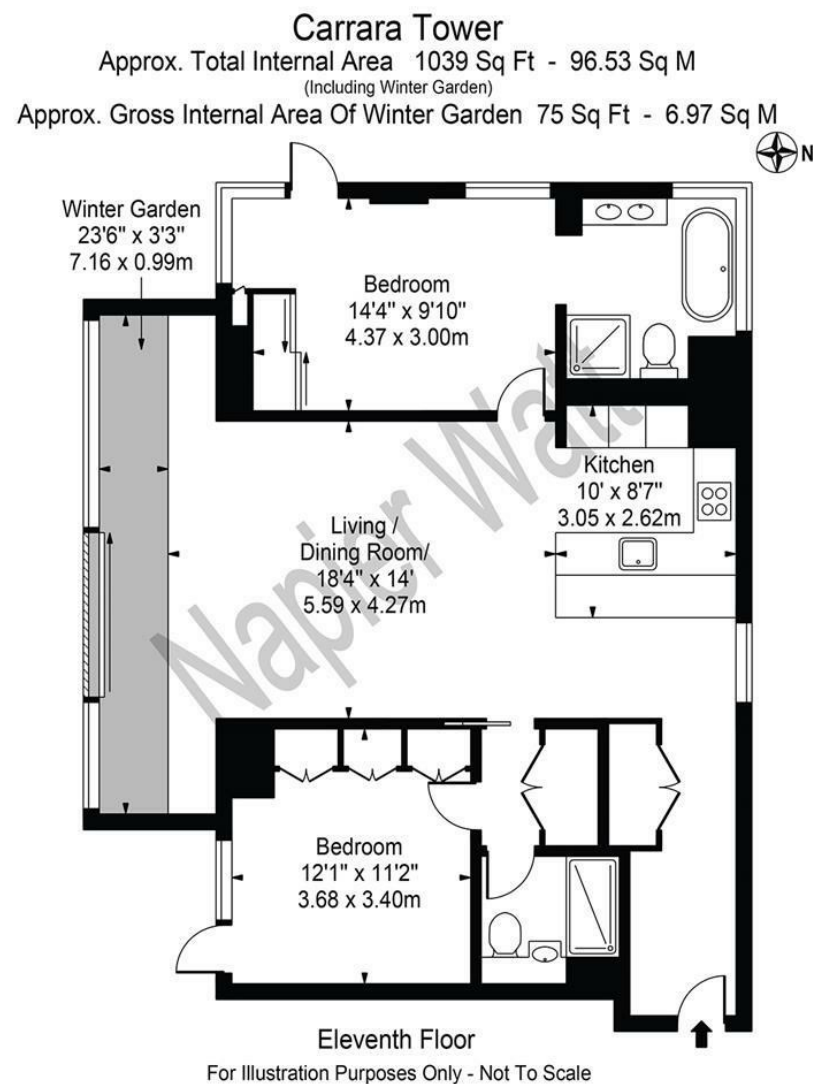
The apartments finished to a superb specification alongside 5* facilities and wifi-enabled landscaped gardens you have everything on your doorstep to enjoy a living experience like no other. Napier Watt are please to offer this two bedroom apartment within the development. The property comprises of 2 Bed rooms a large open plan kitchen/living space and two bathrooms. Carrara Towers has an indoor swimming pool, gym, outdoor yoga and spa faciilties.

Key Features

- 24 HOUR CONCIERGE
- COMFORT COOLING
- OUTSTANDING VIEWS
- GYNAMSIUM

Terms

Fees & Charges: Tenancies exceeding £100,000 Per annum £480 inc VAT, Tenancies where a company is a tenant £480 Inc VAT.



IMPORTANT: We would inform prospective purchasers that these sales particulars have been prepared as a general guide only. A detailed survey has not been carried out, nor the services, appliances and fittings tested. Room sizes should not be relied upon for furnishing purposes and are approximate. If floor plans are included, they are for guidance only and illustration purposes only and may not be to scale. If there are any important matters likely to affect your decision to buy, please contact us before viewing the property.