



9-11 Manson Place,  
South Kensington, SW7

£1,480 Per Week,

NAPIER WATT

T: 0207 935 0011  
E: [enquiries@napierwatt.co.uk](mailto:enquiries@napierwatt.co.uk)  
W: [napierwatt.co.uk](http://napierwatt.co.uk)

35 Berkeley Square, Mayfair, London, W1J 5BF







## Description

A fantastic three-bedroom, three-bathroom, lateral flat on the second floor (with lift) of this elegant, part-stucco fronted, period building. The flat has been finished to a high standard and boasts generous entertaining space. Laid out over 1,399sqft (124sqm) the accommodation comprises a large living room, modern kitchen, two bedrooms with en-suite bathrooms, a third bedroom and guest shower room. The property further benefits from a separate kitchen.

Manson Place is centrally located in the heart of South Kensington, within close proximity to the green expanses of Kensington Gardens and Hyde Park. It benefits from the excellent local amenities that the area has to offer and the nearest underground station is South Kensington (District, Circle and Piccadilly lines) for links into the City, whilst the A4 (M4) is easily accessible for routes to Heathrow and the West.

Available, unfurnished.

3 Bedrooms : 3 Bathrooms : Kensington & Chelsea Council Tax Band G : EPC Rating C

## Key Features

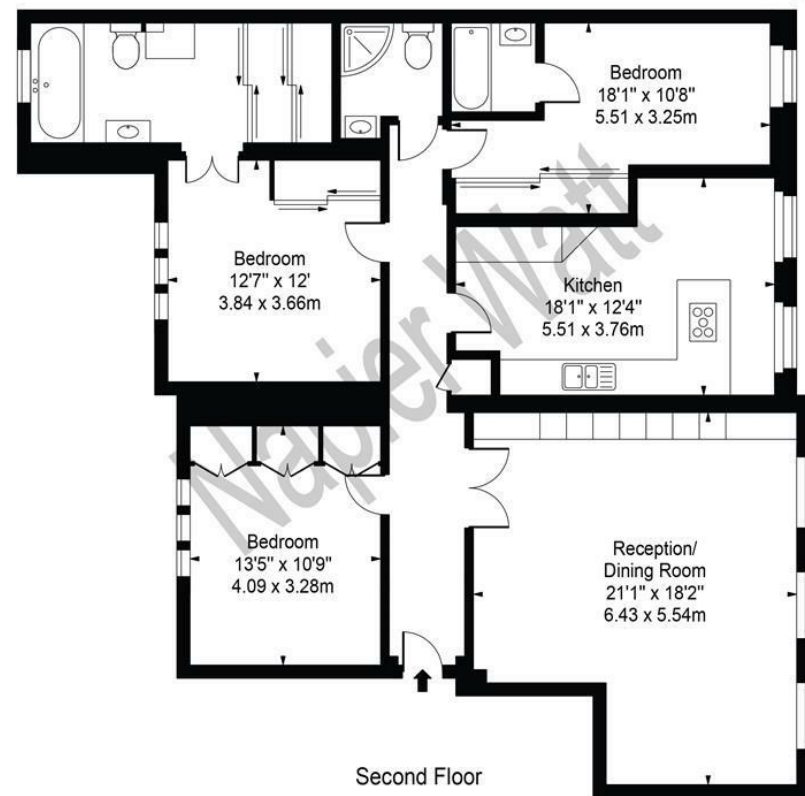
- UNFURNISHED
- SEPARATE KITCHEN
- 1,399 SQ FEET
- SOUTH KENSINGTON

## Terms

Fees & Charges: Tenancies exceeding £100,000 Per annum £480 inc VAT, Tenancies where a company is a tenant £480 Inc VAT.

## Manson Place

Approx. Gross Internal Area 1369 Sq Ft - 127.18 Sq M 



This floor plan should be used as a general outline for guidance only and does not constitute in whole or in part an offer or contract. Any intending purchaser or lessee should satisfy themselves by inspection, searches, enquiries and full survey as to the correctness of each statement. Any areas, measurements or distances quoted are approximate and should not be used to value a property or be the basis of any sale or let.

IMPORTANT: We would inform prospective purchasers that these sales particulars have been prepared as a general guide only. A detailed survey has not been carried out, nor the services, appliances and fittings tested. Room sizes should not be relied upon for furnishing purposes and are approximate. If floor plans are included, they are for guidance only and illustration purposes only and may not be to scale. If there are any important matters likely to affect your decision to buy, please contact us before viewing the property.