



Mayfair Row,  
Mayfair, W1J

£5,000 Per Week,

NAPIER WATT

T: 0207 935 0011

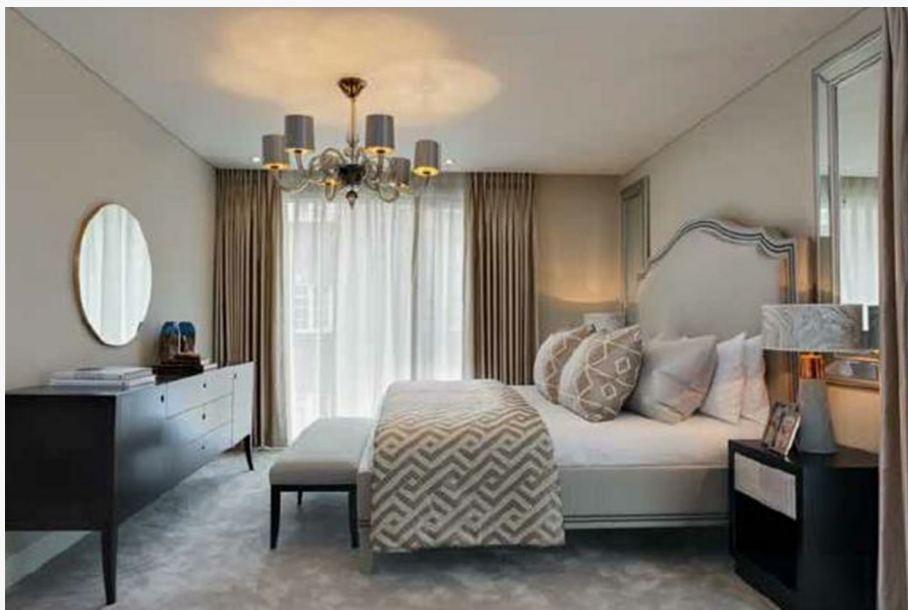
E: [enquiries@napierwatt.co.uk](mailto:enquiries@napierwatt.co.uk)

W: [napierwatt.co.uk](http://napierwatt.co.uk)

35 Berkeley Square, Mayfair, London, W1J 5BF







## Description

A luxurious four bedroom family home, tucked away in the heart of Mayfair. This secure, gated road in Mayfair is home to four recently built houses. The finish throughout this property is superb, and at approximately 2,413sq ft is generously proportioned. The property is arranged over four floors with an additional roof terrace on top and comprises an open plan living room kitchen, sitting room, study, two guest cloakrooms, master bedroom with walk-in wardrobe and en-suite and three further bedrooms with en-suite bathrooms. This house boasts the green spaces of Hyde Park and Green Park a short walk away as well as the shop bars and amenities of Curzon Street, Shepherds Market and Piccadilly nearby. Available, furnished.

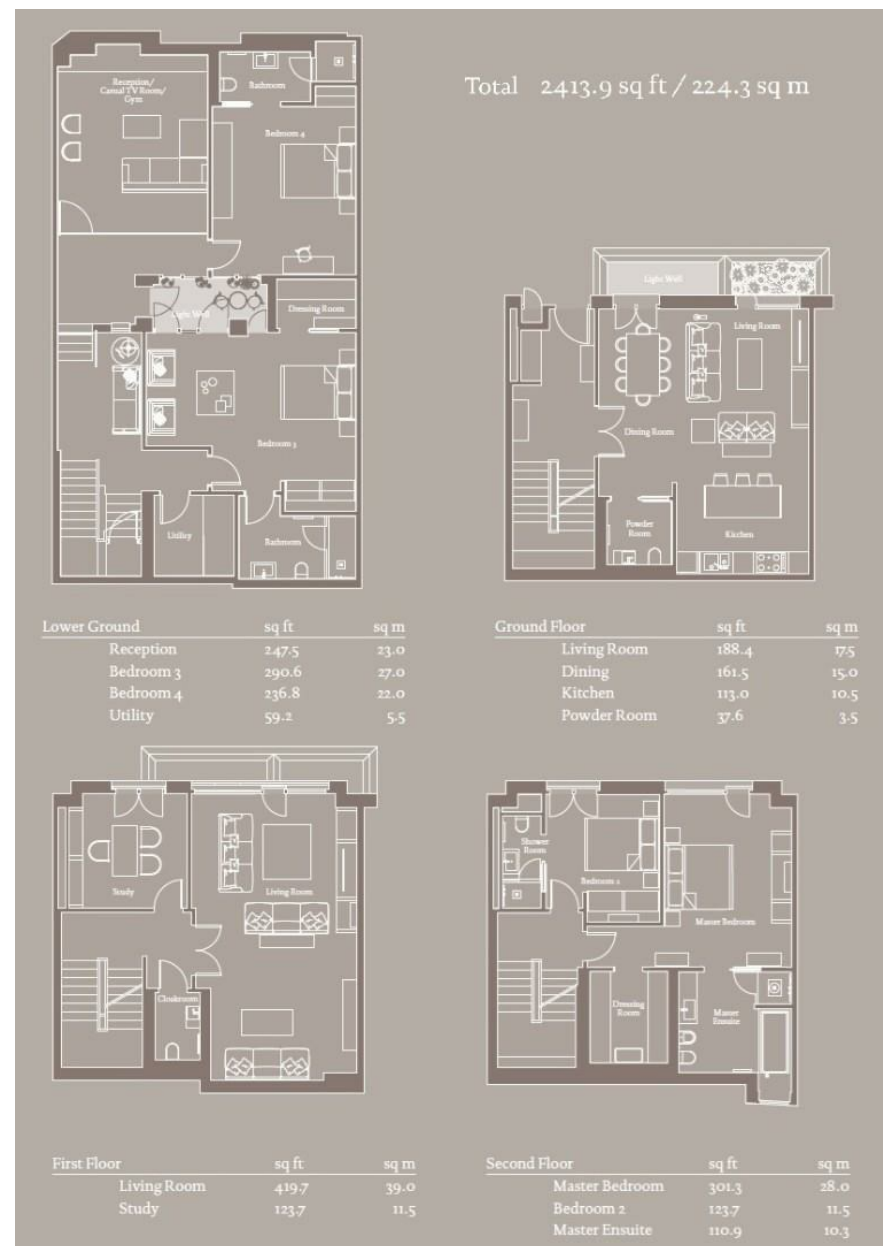
4 Bedrooms : 4 En-Suite Bathroom : 2 Guest WCs : Study : Basement : Roof Terrace : Westminster Council Tax Band H : EPC Rating C

## Key Features

- BEAUTIFULLY PRESENTED
- ROOF TERRACE
- WOODEN FLOORING
- FOUR BEDROOMS
- GATED CUL-DE-SAC

## Terms

Fees & Charges: Tenancies exceeding £100,000 Per annum £480 inc VAT, Tenancies where a company is a tenant £480 Inc VAT.



IMPORTANT: We would inform prospective purchasers that these sales particulars have been prepared as a general guide only. A detailed survey has not been carried out, nor the services, appliances and fittings tested. Room sizes should not be relied upon for furnishing purposes and are approximate. If floor plans are included, they are for guidance only and illustration purposes only and may not be to scale. If there are any important matters likely to affect your decision to buy, please contact us before viewing the property.