



15 Portman Square,
Marylebone, W1H

Asking Price £1,750,000, Leasehold

NAPIER WATT

T: 0207 935 0011
E: enquiries@napierwatt.co.uk
W: napierwatt.co.uk

35 Berkeley Square, Mayfair, London, W1J 5BF







Description

A spacious (1,127 sqft/105 sqm) three bedroom, three bathroom apartment situated on the second floor of this sought after purpose built block with lifts, 24 hour uniformed porter and newly decorated central lobby. Portman Square is ideally located just off Baker Street, Oxford Street is round the corner and there are fantastic transport links close by.

The accommodation comprises three double bedrooms, two of which have ensuite bathrooms and the third is a bathroom. The second bedroom has a Juliet balcony with French windows. The apartment has an entrance hallway with closet, double aspect living room, dining area with marble fireplace and a separate kitchen.

Access to Portman Square communal garden annual fee payable.

Key Features

- 24 HOUR PORTERAGE
- ACCESS TO GARDEN SQUARE (FEE PAYABLE)
- PRESTIGIOUS BUILDING
- LIFTS
- 10 MINS TO OXFORD STREET

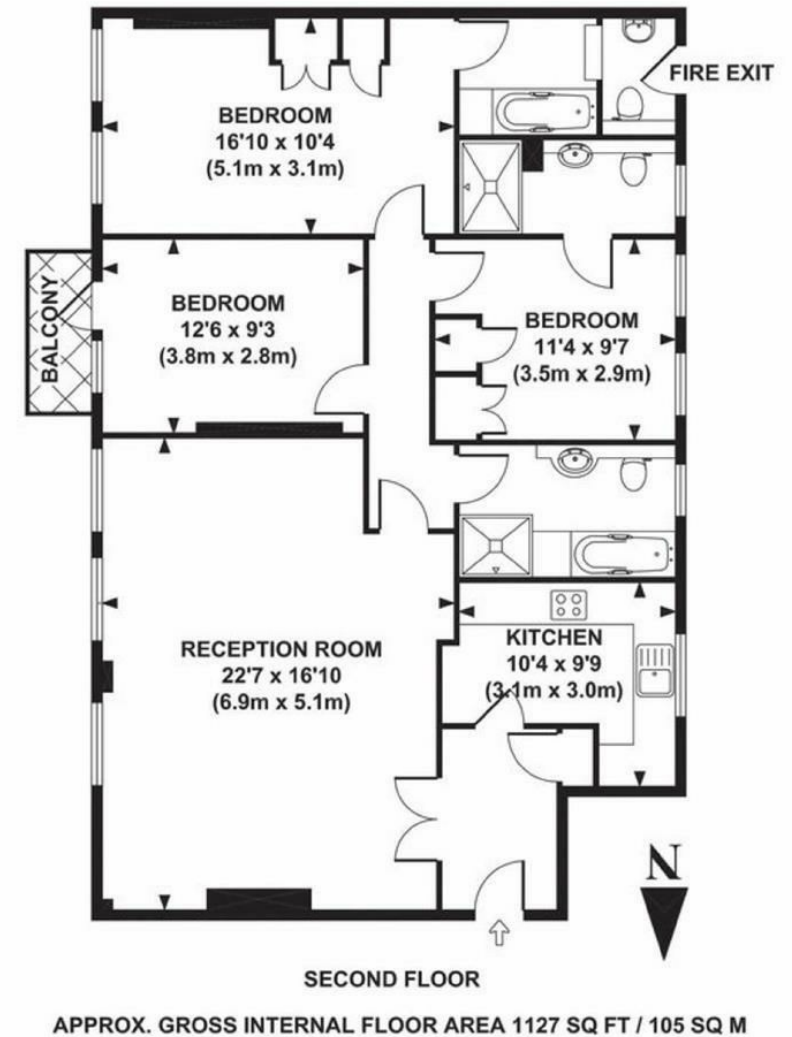
Terms

Leasehold : 74~ Years (less 3 days) from 25 December 1986 ie 36 years

Service Charge £5,760 per half year (includes Sinking Fund)

Ground Rent : 620pa

Council Tax Westminster : Band F



IMPORTANT: We would inform prospective purchasers that these sales particulars have been prepared as a general guide only. A detailed survey has not been carried out, nor the services, appliances and fittings tested. Room sizes should not be relied upon for furnishing purposes and are approximate. If floor plans are included, they are for guidance only and illustration purposes only and may not be to scale. If there are any important matters likely to affect your decision to buy, please contact us before viewing the property.