



Macready House Crawford Street,  
Marylebone, W1H

£1,250 Per Week,

NAPIER WATT

T: 0207 935 0011  
E: [enquiries@napierwatt.co.uk](mailto:enquiries@napierwatt.co.uk)  
W: [napierwatt.co.uk](http://napierwatt.co.uk)

35 Berkeley Square, Mayfair, London, W1J 5BF







## Description

A beautifully presented, fully refurbished two bedroom, two bathroom apartment set on the fifth floor of a sought after purpose built block with 24 hour portorage, lifts, communal gardens.

The accommodation is well proportioned at 852 sqft / 79sqm and is arranged with living room open to dining room, well fitted kitchen, two bedrooms, two bathrooms (one ensuite). EPC : C

Council tax band G

## Key Features

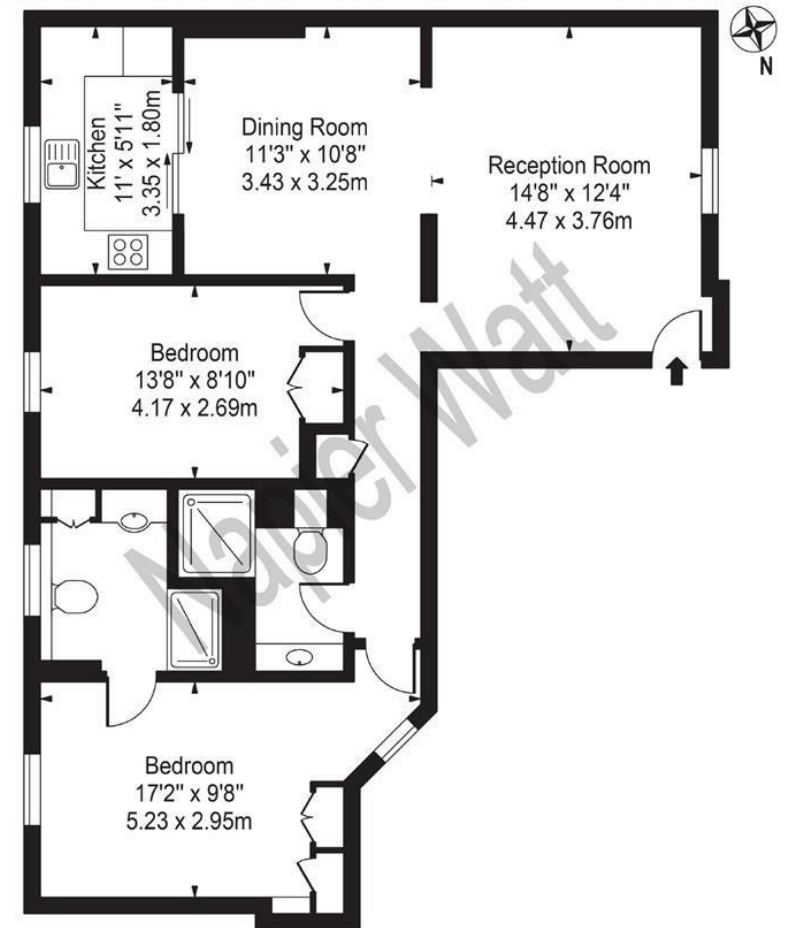
- 24 HOUR PORTER
- FURNISHED
- MARYLEBONE
- LIFTS
- MODERN APARTMENT
- GOOD CONDITION
- GYM

## Terms

Fees & Charges: Tenancies exceeding £100,000 Per annum £480 inc VAT, Tenancies where a company is a tenant £480 Inc VAT.

## Macready House

Approx. Gross Internal Area 852 Sq Ft - 79.15 Sq M



### Fifth Floor

For Illustration Purposes Only - Not To Scale

This floor plan should be used as a general outline for guidance only and does not constitute in whole or in part an offer or contract. Any intending purchaser or lessee should satisfy themselves by inspection, searches, enquiries and full survey as to the correctness of each statement. Any areas, measurements or distances quoted are approximate and should not be used to value a property or be the basis of any sale or let.

IMPORTANT: We would inform prospective purchasers that these sales particulars have been prepared as a general guide only. A detailed survey has not been carried out, nor the services, appliances and fittings tested. Room sizes should not be relied upon for furnishing purposes and are approximate. If floor plans are included, they are for guidance only and illustration purposes only and may not be to scale. If there are any important matters likely to affect your decision to buy, please contact us before viewing the property.