



39 Hill Street,
Mayfair, W1J

£720 Per Week,

NAPIER WATT

T: 0207 935 0011
E: enquiries@napierwatt.co.uk
W: napierwatt.co.uk

35 Berkeley Square, Mayfair, London, W1J 5BF







Description

A bright and spacious, modern one bedroom ground floor apartment located on one of Mayfair's most prestigious roads is now available to rent. It offers a large double bedroom, modern fitted bathroom, spacious reception room, modern fitted kitchen and ample storage space and access to a private gated communal garden. 39 Hill Street, benefits from spacious living accommodation, lift service, on-site building manager, and is nestled conveniently between near Hyde Park and Green Park. Green Park, Bond Street and Marble Arch Stations are all within a short stroll away. (Available 20th of October).

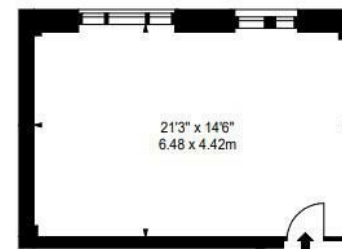
1 Bedroom : 1 Bathroom : Porter : Lift : EPC rating D : Council tax band E

Key Features

- PET FRIENDLY
- LIFTS
- 24 HOUR BUILDING MANAGER
- CCTV
- SUPERFAST BROADBAND
- VIDEO ENTRY

Terms

Fees & Charges: Tenancies exceeding £100,000 Per annum £480 inc VAT, Tenancies where a company is a tenant £480 Inc VAT.



GROUND FLOOR

Approx. Gross Internal Area*
300 ft² - 27.87 m²

*As Defined by the RICS - Code of Measuring Practice

Property Details:
Flat 4
39 Hill Street
Mayfair
W1J 5LZ

SCALE
1:100 @ A4

Plans Drawn: 28.07.2016

IMPORTANT: We would inform prospective purchasers that these sales particulars have been prepared as a general guide only. A detailed survey has not been carried out, nor the services, appliances and fittings tested. Room sizes should not be relied upon for furnishing purposes and are approximate. If floor plans are included, they are for guidance only and illustration purposes only and may not be to scale. If there are any important matters likely to affect your decision to buy, please contact us before viewing the property.