



Barrie House Lancaster Gate,  
Hyde Park, W2

£1,300 Per Week,

NAPIER WATT

T: 0207 935 0011  
E: [enquiries@napierwatt.co.uk](mailto:enquiries@napierwatt.co.uk)  
W: [napierwatt.co.uk](http://napierwatt.co.uk)

35 Berkeley Square, Mayfair, London, W1J 5BF







## Description

A meticulously designed, three-bedroom, three-bathroom apartment with 24-hour portage. Situated on the second floor of a purpose built block, the reception and master bedroom overlook Hyde Park with lovely southerly, sunny views. Occupying approximately 1,076sq ft / 100sq m. The apartment comprises a spacious living room, separate kitchen, two bedrooms with en-suite bathrooms, a third bedroom and shower room. The building is across the road from Hyde Park and is a short walk to Lancaster Gate tube station. Available now, furnished.

3 Bedrooms : 3 Bathrooms : 24-Hour Porter : Lifts : Westminster Council Tax Band G : EPC Rating C

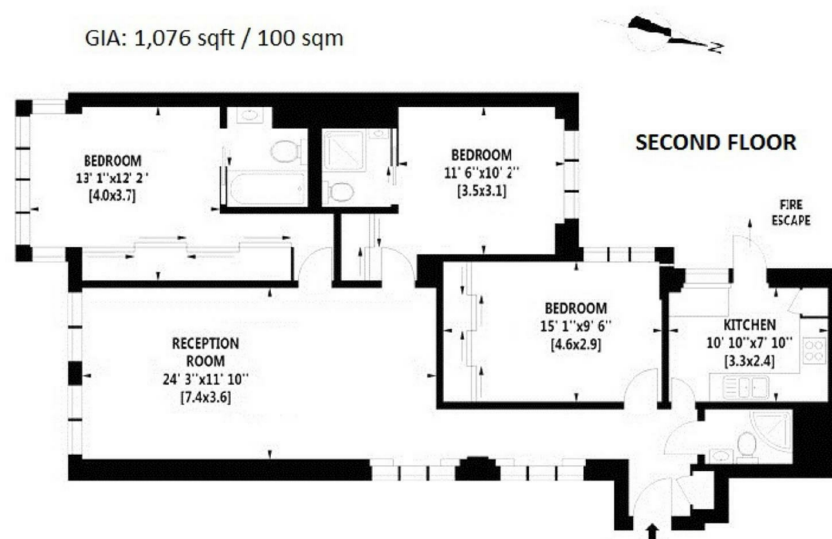
## Key Features

- 24 HOUR PORTER
- CLOSE ACCESS TO HYDE PARK
- PASSENGER LIFT
- PARK FACING VIEWS

## Terms

Fees & Charges: Tenancies exceeding £100,000 Per annum £480 inc VAT, Tenancies where a company is a tenant £480 Inc VAT.

GIA: 1,076 sqft / 100 sqm



Not to Scale. Measurements are approximate, prepared in accordance with RICS code of measuring practice.

IMPORTANT: We would inform prospective purchasers that these sales particulars have been prepared as a general guide only. A detailed survey has not been carried out, nor the services, appliances and fittings tested. Room sizes should not be relied upon for furnishing purposes and are approximate. If floor plans are included, they are for guidance only and illustration purposes only and may not be to scale. If there are any important matters likely to affect your decision to buy, please contact us before viewing the property.