



The Chilterns 24 Paddington Street, Marylebone Village, W1U

Asking Price £4,950,000, Leasehold

NAPIER WATT

T: 0207 935 0011

E: enquiries@napierwatt.co.uk

W: napierwatt.co.uk

35 Berkeley Square, Mayfair, London, W1J 5BF





Description

The apartment is beautifully presented, showcasing two double bedrooms with ensuite bathrooms, a separate guest WC, and a spacious reception room with large floor to ceiling windows that offers stunning views of Paddington Street Gardens. The flat is benefited with smart control, underfloor heating and AC.

All residents benefit from 24 hour security, CCTV along with a full concierge service. The apartment comes with one secure underground car park space and a secured storage unit. Additional features include state of the art fully equipped gym, cinema, treatment rooms, sauna and steam room.

Entrance Hall : Reception Room : Open Plan Bespoke Fitted Kitchen : Master Bedroom With Ensuite Bathroom : Second Bedroom With Ensuite : Guest WC : Secure Parking : Storage Locker : Wine Cellar : Communal Cinema : Gym : Sauna / Steam Room : Treatment Rooms : EPC Rating B : Council Tax H

Key Features

- AIR CONDITIONING
- VIEWS OVER PADDINGTON GARDENS
- SECURE PARKING
- WINE CELLAR
- 24 HOUR CONCIERGE
- SAUNA, STEAM ROOM & TREATMENT ROOMS
- GYM
- STORAGE LOCKER

Terms

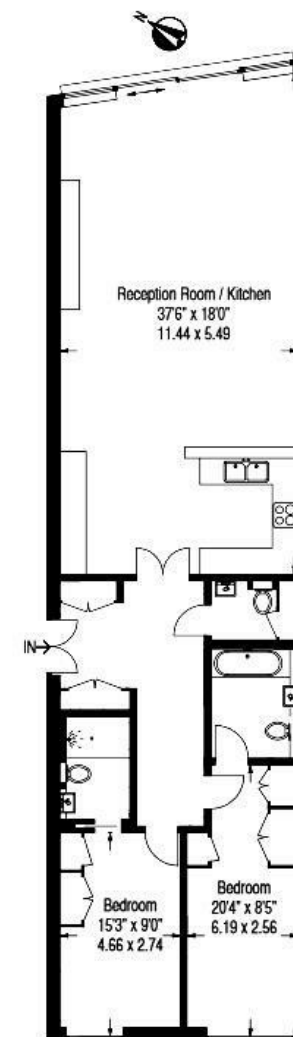
Leasehold : 992

Service Charge : £15,600

Council Tax Band : Westminster Band H

The Chilterns, Paddington Street, W1U

Approximate Gross Internal Area
1271 sq ft / 118.1 sq m



Third Floor

IMPORTANT: We would inform prospective purchasers that these sales particulars have been prepared as a general guide only. A detailed survey has not been carried out, nor the services, appliances and fittings tested. Room sizes should not be relied upon for furnishing purposes and are approximate. If floor plans are included, they are for guidance only and illustration purposes only and may not be to scale. If there are any important matters likely to affect your decision to buy, please contact us before viewing the property.