



Westmark Tower, 1 Newcastle Place,  
Paddington, W2

£1,600 Per Week,

NAPIER WATT

T: 0207 935 0011  
E: [enquiries@napierwatt.co.uk](mailto:enquiries@napierwatt.co.uk)  
W: [napierwatt.co.uk](http://napierwatt.co.uk)

35 Berkeley Square, Mayfair, London, W1J 5BF







## Description

NAPIER WATT are pleased to offer this FURNISHED stylish and contemporary three bed apartment located in the award winning luxury development. The 16th floor apartment boasts panoramic views and comprises of three bedrooms, two bathrooms, a large open plan living area, with open plan kitchen which leads onto the balcony. The building further benefits from comfort cooling, an indoor swimming pool, jacuzzi, sauna and steam room, gym, cinema room and dining area. A parking space is included with the apartment. Available now, furnished.

NB: some (variable charge) utility bills are payable to the Landlord in addition to rent.

Westminster Council Tax Band G. EPC Rating C.

## Key Features

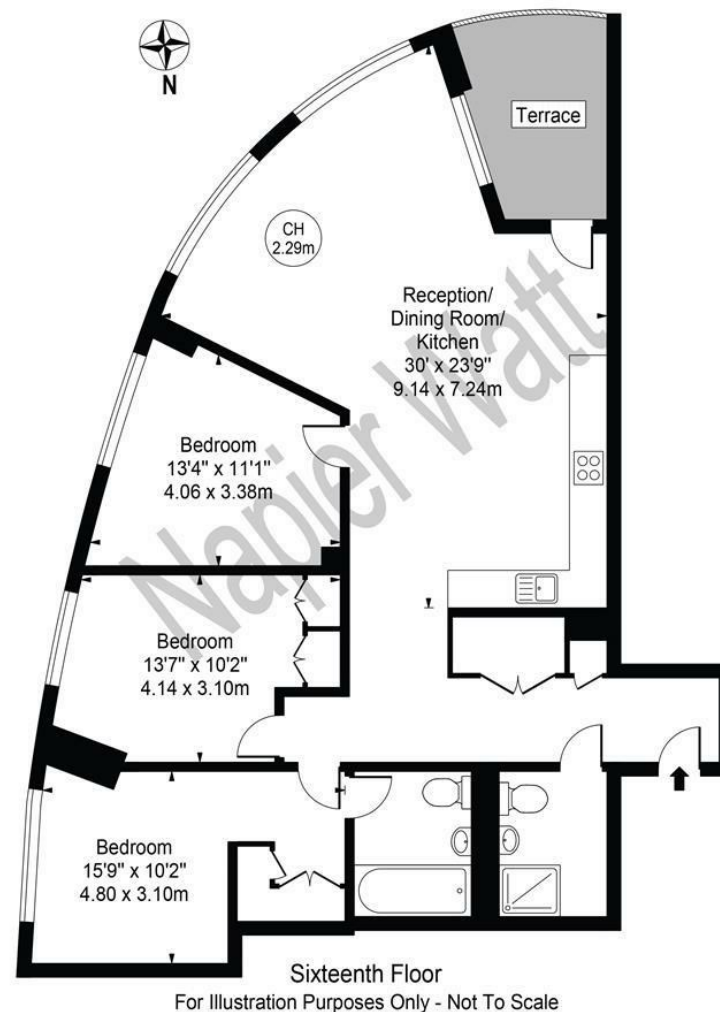
- 24 HOUR CONCIERGE
- COMFORT COOLING
- SWIMMING POOL
- MEETING ROOMS
- PASSENGER LIFT
- GYMNASIUM & SAUNA
- PARKING
- OUTSTANDING VIEWS

## Terms

Fees & Charges: Tenancies exceeding £100,000 Per annum £480 inc VAT, Tenancies where a company is a tenant £480 Inc VAT.

## Westmark Tower

Approx. Gross Internal Area 1145 Sq Ft - 106.37 Sq M



This floor plan should be used as a general outline for guidance only and does not constitute in whole or in part an offer or contract. Any intending purchaser or lessee should satisfy themselves by inspection, searches, enquiries and full survey as to the correctness of each statement. Any areas, measurements or distances quoted are approximate and should not be used to value a property or be the basis of any sale or let.

IMPORTANT: We would inform prospective purchasers that these sales particulars have been prepared as a general guide only. A detailed survey has not been carried out, nor the services, appliances and fittings tested. Room sizes should not be relied upon for furnishing purposes and are approximate. If floor plans are included, they are for guidance only and illustration purposes only and may not be to scale. If there are any important matters likely to affect your decision to buy, please contact us before viewing the property.