



CGI FURNITURE

Bryanston Court | George Street,
Marylebone, W1H

£1,500 Per Week,

NAPIER WATT

T: 0207 935 0011
E: enquiries@napierwatt.co.uk
W: napierwatt.co.uk

35 Berkeley Square, Mayfair, London, W1J 5BF







Description

Bryanston Court is an extremely well-maintained, secure purpose-built mansion block with heating and hot water included, 24-hour uniformed porter service, and an impressive and newly refurbished lobby at the front. Internally, the property has been lovingly refurbished to a high standard, and offers spacious accommodation, laid out with two double bedrooms, two bathrooms (one en-suite).

Benefits include wood floors within the reception area and hallway and carpets within in the two double bedrooms. There is elegant entertaining space with high ceilings and extensive storage in the bedrooms. Further benefits include key access to the private Bryanston Square Gardens and also cycle racks in the basement if required.

Bryanston Court is located at the western end of George Street, close to the prestigious Bryanston Square and within a short walk of Marble Arch, Hyde Park and Oxford Street.

Two Bedrooms : Two Bathrooms : 24-Hour Porter : Heating & Hot Water Included : Communal Gardens : Cycle Racks : Westminster Council Tax Band G : EPC Rating D

Key Features

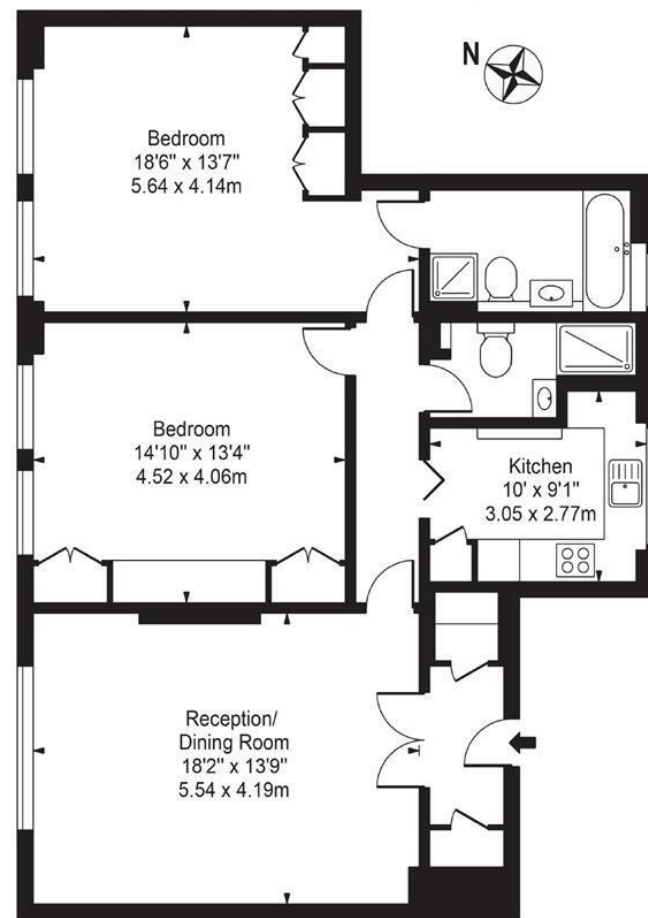
- 24-HOUR PORTER
- HEATING & HOT WATER INCLUDED
- SHORT WALK FROM OXFORD STREET
- LIFTS
- CYCLE RACK
- FURNISHED OR UNFURNISHED

Terms

Fees & Charges: Tenancies exceeding £100,000 Per annum £480 inc VAT, Tenancies where a company is a tenant £480 Inc VAT.

Bryanston Court

Approx. Gross Internal Area 978 Sq Ft - 90.86 Sq M



Ground Floor
For Illustration Purposes Only - Not To Scale

This floor plan should be used as a general outline for guidance only and does not constitute in whole or in part an offer or contract. Any intending purchaser or lessee should satisfy themselves by inspection, searches, enquiries and full survey as to the correctness of each statement. Any areas, measurements or distances quoted are approximate and should not be used to value a property or be the basis of any sale or let.

IMPORTANT: We would inform prospective purchasers that these sales particulars have been prepared as a general guide only. A detailed survey has not been carried out, nor the services, appliances and fittings tested. Room sizes should not be relied upon for furnishing purposes and are approximate. If floor plans are included, they are for guidance only and illustration purposes only and may not be to scale. If there are any important matters likely to affect your decision to buy, please contact us before viewing the property.