



39 Hill Street,
Mayfair, W1J

£740 Per Week,

NAPIER WATT

T: 0207 935 0011
E: enquiries@napierwatt.co.uk
W: napierwatt.co.uk

35 Berkeley Square, Mayfair, London, W1J 5BF







Description

Set over 419 sq ft, this superb one bedroom apartment comprises of one large double bedroom, a modern bathroom, spacious reception room with rear facing views over Hay's Mews and a unique kitchenette with access to a private gated communal garden.

The apartment is in one of London's most prestigious locations, Mayfair neighbouring the famous Berkeley Square. This beautiful purpose built building benefits from spacious living accommodation, lift service, on-site building manager and is nestled conveniently between two of London's parks Hyde Park and Green Park.

London underground stations, Green Park, Bond Street and Marble Arch are all within a short stroll away.

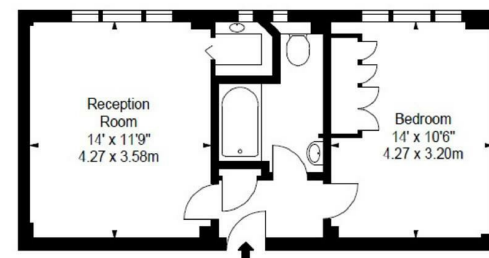
Council tax band E - £1,056.16 per annum.

Key Features

- ON SITE BUILDING MANAGER
- VIDEO ENTRY
- CCTV
- LIFT SERVICE
- ACCESS TO PRIVATE GATED COMMUNAL GARDEN

Terms

Fees & Charges: Tenancies exceeding £100,000 Per annum £480 inc VAT, Tenancies where a company is a tenant £480 Inc VAT.



FLAT 47
39 HILL STREET
W1

Fourth Floor

Approx Gross Internal Area*
419 Sq Ft - 38.93 Sq M

IMPORTANT: We would inform prospective purchasers that these sales particulars have been prepared as a general guide only. A detailed survey has not been carried out, nor the services, appliances and fittings tested. Room sizes should not be relied upon for furnishing purposes and are approximate. If floor plans are included, they are for guidance only and illustration purposes only and may not be to scale. If there are any important matters likely to affect your decision to buy, please contact us before viewing the property.