



24 Buckingham Gate,
Westminster, SW1E

£2,600 Per Week,

NAPIER WATT

T: 0207 935 0011
E: enquiries@napierwatt.co.uk
W: napierwatt.co.uk

35 Berkeley Square, Mayfair, London, W1J 5BF







Description

A stunning Penthouse Apartment, adjacent to Buckingham Palace and with stunning views, directly over St James Park and Birdcage Walk. The apartment occupies the entire two top floors (7th and 8th) with lift, high ceilings, AC, day porter, substantial terrace and additional balcony. Buckingham Gate's central location puts it at the heart of the capital with St James's Park station, just five minutes walk away, offers access to the extensive tube network and offers easy access to Victoria station and the Gatwick express. Birdcage Walk Conservation Area is only 200m from Buckingham Palace with both Green Park and St James Park on your doorstep. St James Park Underground station is just 0.2 miles away & Victoria underground & mainline station only 0.4 miles away. (All times and distances are approximate).

3 Bedrooms : 3 Bathrooms : Balcony : Porter : Lift : Westminster Council Tax Band H

Key Features

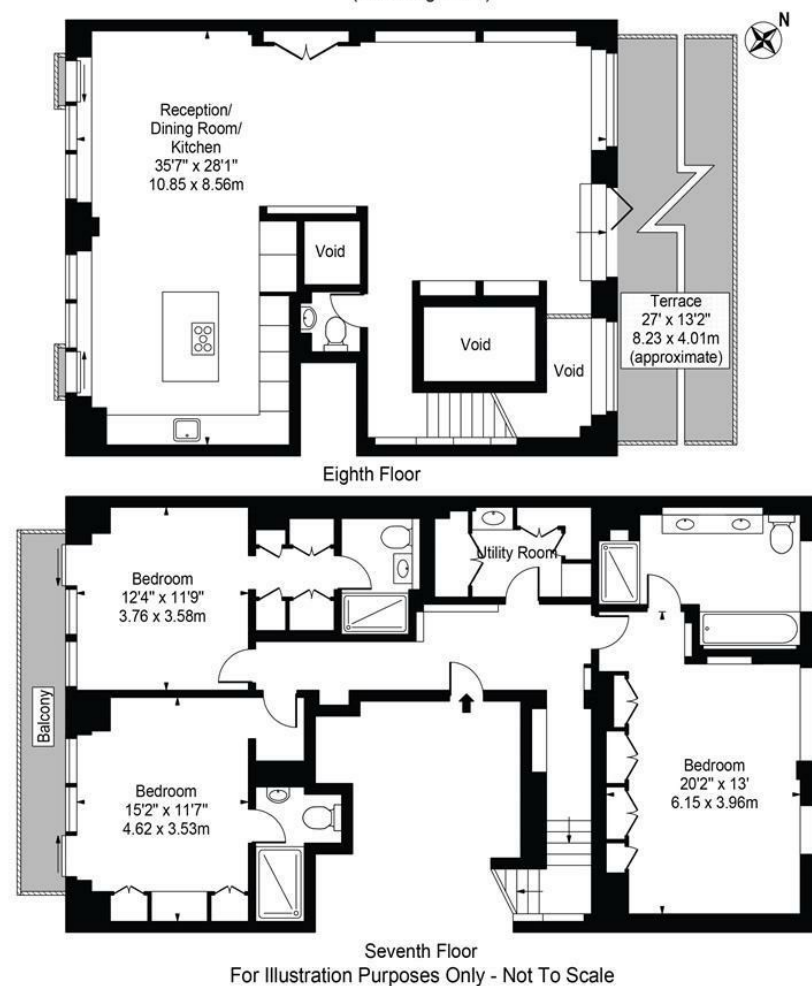
- PENTHOUSE APARTMENT
- EXCEPTIONAL VIEWS
- PASSENGER LIFT
- ROOF TERRACE
- GOOD CONDITION
- PORTER

Terms

Fees & Charges: Tenancies exceeding £100,000 Per annum £480 inc VAT, Tenancies where a company is a tenant £480 Inc VAT.

Buckingham Gate

Approx. Gross Internal Area 1924 Sq Ft - 178.75 Sq M
(Excluding Voids)



This floor plan should be used as a general outline for guidance only and does not constitute in whole or in part an offer or contract. Any intending purchaser or lessee should satisfy themselves by inspection, searches, enquiries and full survey as to the correctness of each statement. Any areas, measurements or distances quoted are approximate and should not be used to value a property or be the basis of any sale or let.

IMPORTANT: We would inform prospective purchasers that these sales particulars have been prepared as a general guide only. A detailed survey has not been carried out, nor the services, appliances and fittings tested. Room sizes should not be relied upon for furnishing purposes and are approximate. If floor plans are included, they are for guidance only and illustration purposes only and may not be to scale. If there are any important matters likely to affect your decision to buy, please contact us before viewing the property.