



Fursecroft George Street,  
Marylebone, W1H

Asking Price £3,300,000, Leasehold

NAPIER WATT

T: 0207 935 0011  
E: [enquiries@napierwatt.co.uk](mailto:enquiries@napierwatt.co.uk)  
W: [napierwatt.co.uk](http://napierwatt.co.uk)

35 Berkeley Square, Mayfair, London, W1J 5BF







## Description

A fantastic four double bedroom lateral apartment benefitting from its own private entrance and 24 hour portorage in the heart of Marylebone. Superbly located on the corner of George Street and Brown Street, the property is located within a short stroll of Edgware Road and the facilities of Marble Arch. Hyde Park and Marylebone are equally within easy reach.

Entrance Hall : Double Reception Room : Fully Fitted Kitchen : Four Double Bedroom Suites : Guest WC : EPC C :

## Key Features

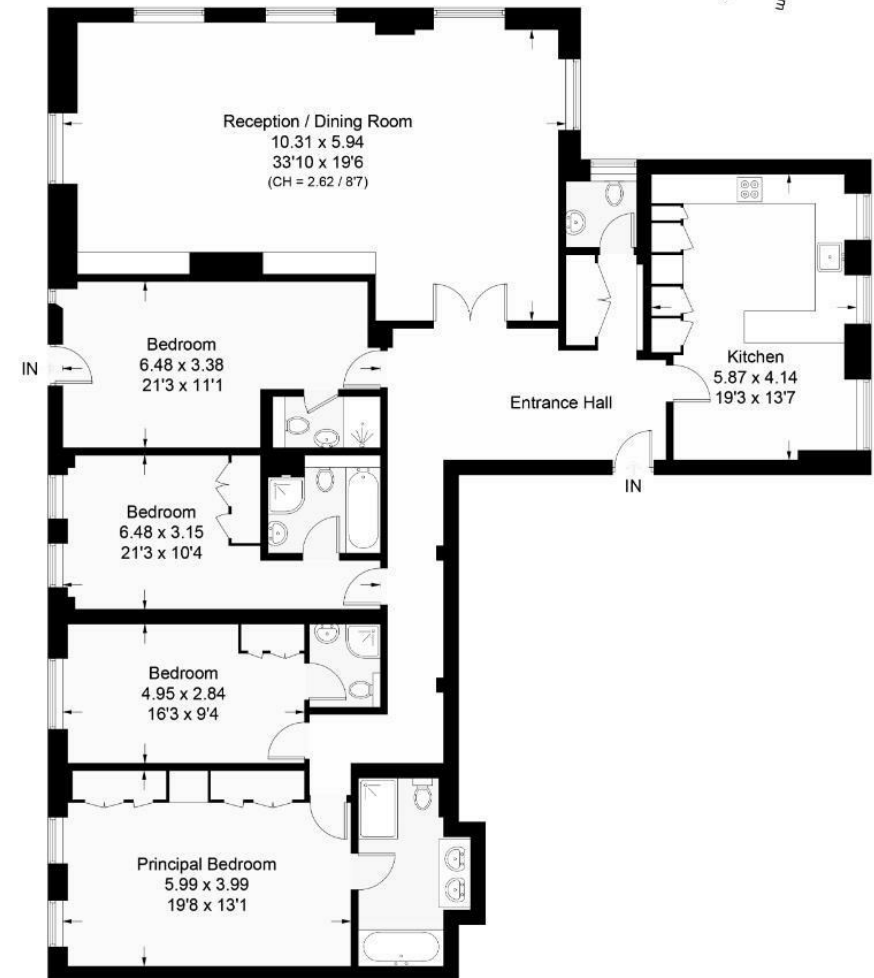
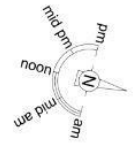
- NEWLY REFURBISHED
- LIFT
- EXCELLENT SECURITY
- 24 HOUR PORTORAGE
- CCTV

## Terms

Leasehold : 22 March 2123 - 99 years

## Fursecroft, W1H

Approximate Area = 2246 sq ft / 208.7 sq m  
Including Limited Use Area (30 sq ft / 2.8 sq m)



## Raised Ground Floor

This plan is for layout guidance only. Not drawn to scale unless stated. Windows and door openings are approximate. Whilst every care is taken in the preparation of this plan, please check all dimensions, shapes and compass bearings before making any decisions reliant upon them. (ID958982)

IMPORTANT: We would inform prospective purchasers that these sales particulars have been prepared as a general guide only. A detailed survey has not been carried out, nor the services, appliances and fittings tested. Room sizes should not be relied upon for furnishing purposes and are approximate. If floor plans are included, they are for guidance only and illustration purposes only and may not be to scale. If there are any important matters likely to affect your decision to buy, please contact us before viewing the property.