



Ravensbourne Apartments,  
5 Central Avenue, SW6

£850 Per Week,

NAPIER WATT

T: 0207 935 0011  
E: [enquiries@napierwatt.co.uk](mailto:enquiries@napierwatt.co.uk)  
W: [napierwatt.co.uk](http://napierwatt.co.uk)

35 Berkeley Square, Mayfair, London, W1J 5BF







## Description

Napier Watt are delighted to offer this lovely apartment located in the sought-after development Ravensbourne Apartments. The flat is spread across 977sq ft and consists of two double bedrooms, two bathroom with an open plan kitchen and living room. The property benefits from a 24-hour concierge, gorgeous communal gardens with outdoor gym equipment and is just by the river. The apartment is offered unfurnished.

1 Bedroom : Lift : Communal Gardens : Concierge : EPC rating B

## Key Features

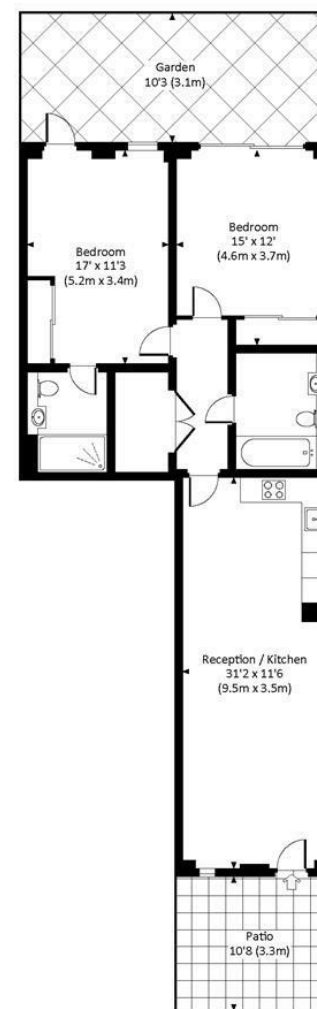
- 24 Hour Concierge
- 4th Floor
- Private Garden
- Communal Garden

## Terms

Fees & Charges: Tenancies exceeding £100,000 Per annum £480 inc VAT, Tenancies where a company is a tenant £480 Inc VAT.

## RAVENSBOURNE APARTMENTS, SW6

Approx. gross internal area  
977 Sq Ft. / 90.8 Sq M.



FOURTH FLOOR

djd All measurements are approximate and for illustration purposes only as defined by theRICS Code of Measuring Practice © 2014  
Dowling Jones Design www.dowlingjones.com 020 7610 9933

IMPORTANT: We would inform prospective purchasers that these sales particulars have been prepared as a general guide only. A detailed survey has not been carried out, nor the services, appliances and fittings tested. Room sizes should not be relied upon for furnishing purposes and are approximate. If floor plans are included, they are for guidance only and illustration purposes only and may not be to scale. If there are any important matters likely to affect your decision to buy, please contact us before viewing the property.