



Moore House 2 Gatliff Road,
Grosvenor Waterside, SW1W

Asking Price £850,000, Leasehold

NAPIER WATT

T: 0207 935 0011
E: enquiries@napierwatt.co.uk
W: napierwatt.co.uk

35 Berkeley Square, Mayfair, London, W1J 5BF







Description

Spacious one bedroom apartment fantastically located on the third floor of the Grosvenor Waterside development (with lift access) within easy reach of Sloane Square and Victoria.

Accommodation offers a large open plan living room kitchen with modern appliances and Juliet balcony, large double bedroom and modern bathroom with bath and shower.

The property benefits wooden flooring throughout and excellent storage. Grosvenor Waterside development offers 24 Hour Concierge and Leisure Facilities including a gym and treatment room, it is located on the river just a short walk from Sloane Square (District and Circle Line) and Victoria (Victoria and District Line and national trains with direct access to Gatwick Airport).

Entrance Hall : Reception Room : Open Plan Kitchen : Double Bedroom : Bathroom : Juliet Balcony : 24 Hour Concierge : Gym : Treat Room : EPC Rating B :

Key Features

- JULIET BALCONY
- PASSENGER LIFT
- 24 HOUR CONCIERGE
- GYM AND SPA FACILITIES ON SITE

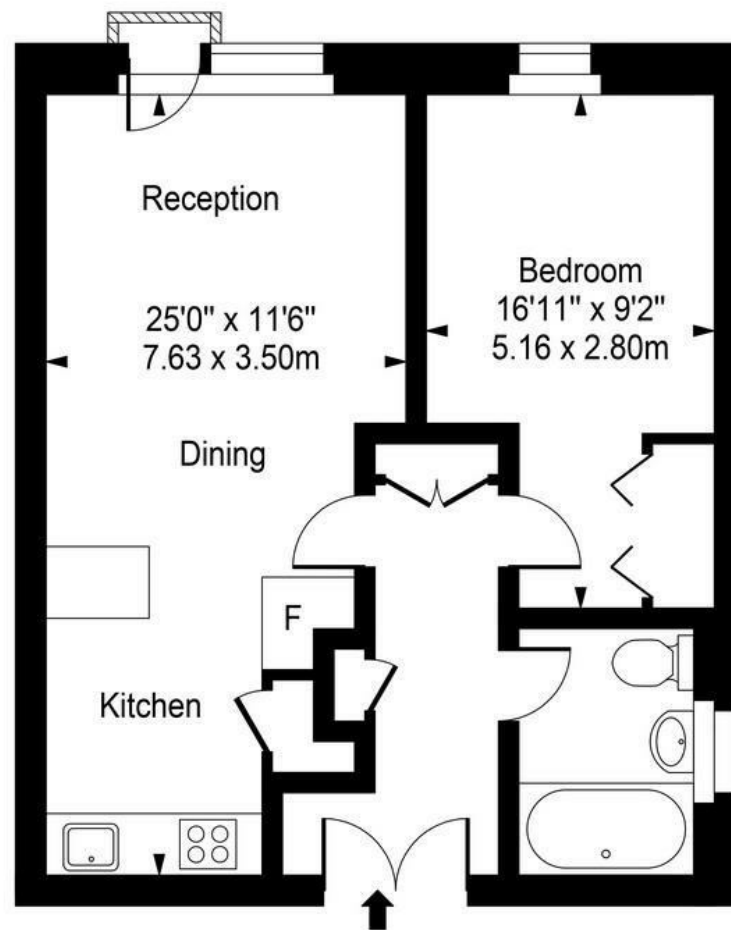
Terms

Leasehold : 999 years from 1 January 2003

Service Charge 2024/25: £5,000 pa

Ground Rent :

Council Tax Band E Westminster



Third Floor

Approx Gross Internal Area **526 Sq Ft - 48.88 Sq M**

IMPORTANT: We would inform prospective purchasers that these sales particulars have been prepared as a general guide only. A detailed survey has not been carried out, nor the services, appliances and fittings tested. Room sizes should not be relied upon for furnishing purposes and are approximate. If floor plans are included, they are for guidance only and illustration purposes only and may not be to scale. If there are any important matters likely to affect your decision to buy, please contact us before viewing the property.