



29 Devonshire Place Mews,
Marylebone, W1G

£850 Per Week,

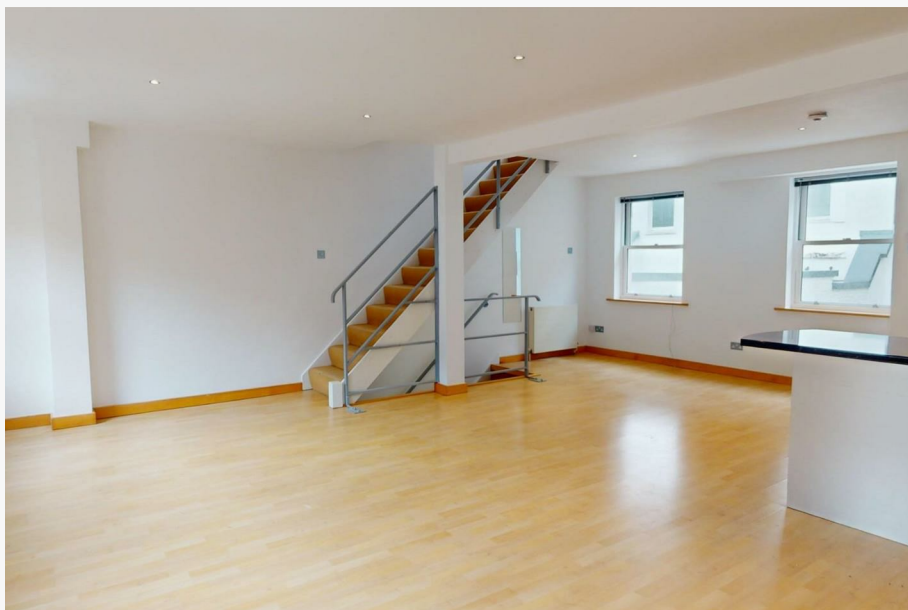
NAPIER WATT

T: 0207 935 0011
E: enquiries@napierwatt.co.uk
W: napierwatt.co.uk

35 Berkeley Square, Mayfair, London, W1J 5BF







Description

A first and second floor apartment located in this quiet cobbled mews moments from Marylebone High Street. This unfurnished duplex of approximately 1,012sq ft has wooden flooring throughout and comprises a large open plan living room kitchen on the first floor. Upstairs, there are two equally sized bedrooms and two bathrooms. This home is walking distance from Baker Street and Regents Park tubes stations as well as a multitude of Marylebone's finest shops and restaurants. Available, unfurnished.

2 Bedrooms : 2 Bathrooms : Westminster Council Tax Band G : EPC Rating

Key Features

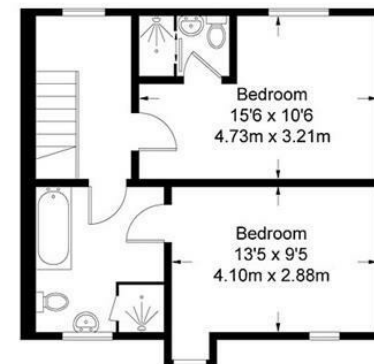
- HEART OF MARYLEBONE VILLAGE
- LIGHT AND BRIGHT
- FURNISHED / UNFURNISHED
- FIRST FLOOR DUPLEX
- SPACIOUS
- PET FRIENDLY AT PREMIUM

Terms

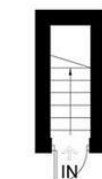
Fees & Charges: Tenancies exceeding £100,000 Per annum £480 inc VAT, Tenancies where a company is a tenant £480 Inc VAT.

Devonshire Place Mews

Approximate Gross Internal Area = 1012 sq ft / 94.1 sq m



Second Floor = 465 sq ft / 43.2 sq m



**Ground Floor
20 sq ft / 1.9 sq m**



First Floor = 527 sq ft / 49.0 sq m

IMPORTANT: We would inform prospective purchasers that these sales particulars have been prepared as a general guide only. A detailed survey has not been carried out, nor the services, appliances and fittings tested. Room sizes should not be relied upon for furnishing purposes and are approximate. If floor plans are included, they are for guidance only and illustration purposes only and may not be to scale. If there are any important matters likely to affect your decision to buy, please contact us before viewing the property.