



Princes Court,  
Brompton Road, SW3

£1,400 Per Week,

NAPIER WATT

T: 0207 935 0011  
E: [enquiries@napierwatt.co.uk](mailto:enquiries@napierwatt.co.uk)  
W: [napierwatt.co.uk](http://napierwatt.co.uk)

35 Berkeley Square, Mayfair, London, W1J 5BF







## Description

Four-bedroom, three-bathroom apartment set on the fifth-floor of this purpose-built, portered block opposite Harrods. Set over approximately 1,200 sq ft (111 sqm) the property comprises a living room with a balcony, separate kitchen, four bedrooms, two en-suite, separate shower room and guest cloakroom. The property further benefits from wooden flooring, great natural light as well as heating & hot water included within the rental price. The building benefits from two passenger lifts and 24-hour porter, all ideally situated within a popular development in the heart of Knightsbridge, opposite the world famous department store Harrods. Knightsbridge Underground Station is across the road along with some world class shops and restaurants within walking distance to the apartment.

Available, furnished.

4 Bedrooms : 3 Bathrooms : Passenger Lifts : 24-Hour Porter : Westminster Council Tax Band H : EPC Rating C

## Key Features

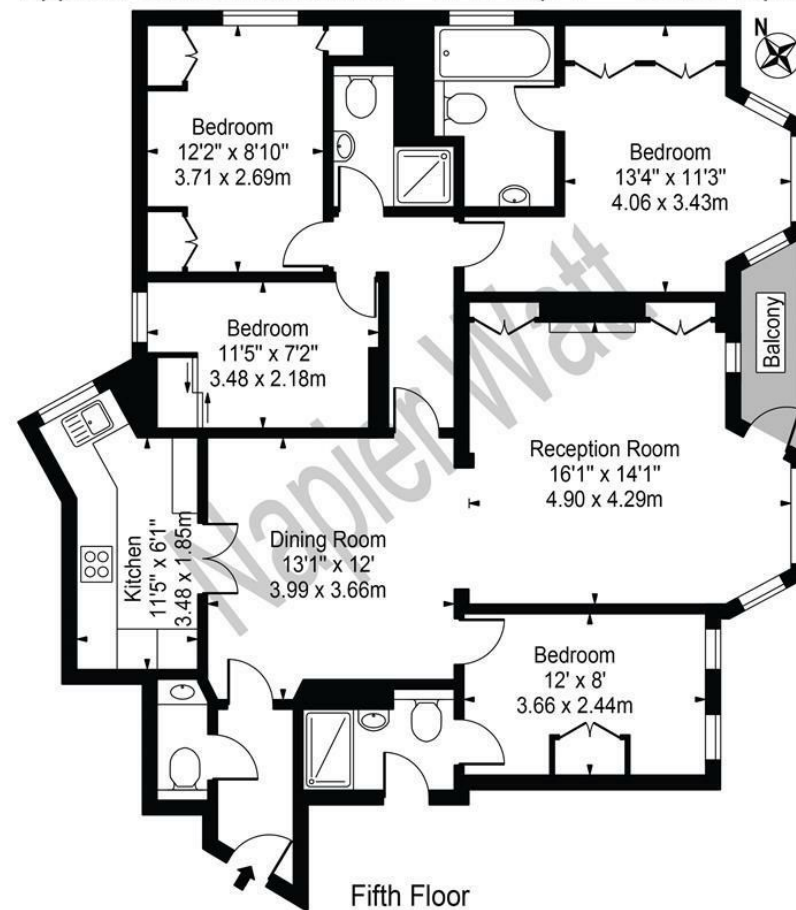
- PASSENGER LIFTS
- HEATING & HOT WATER INCLUDED
- BALCONY
- 24-HOUR PORTER
- FOUR BEDROOMS

## Terms

Fees & Charges: Tenancies exceeding £100,000 Per annum £480 inc VAT, Tenancies where a company is a tenant £480 Inc VAT.

## Princes Court

Approx. Gross Internal Area 1177 Sq Ft - 109.35 Sq M



Fifth Floor  
For Illustration Purposes Only - Not To Scale

This floor plan should be used as a general outline for guidance only and does not constitute in whole or in part an offer or contract. Any intending purchaser or lessee should satisfy themselves by inspection, searches, enquiries and full survey as to the correctness of each statement. Any areas, measurements or distances quoted are approximate and should not be used to value a property or be the basis of any sale or let.

IMPORTANT: We would inform prospective purchasers that these sales particulars have been prepared as a general guide only. A detailed survey has not been carried out, nor the services, appliances and fittings tested. Room sizes should not be relied upon for furnishing purposes and are approximate. If floor plans are included, they are for guidance only and illustration purposes only and may not be to scale. If there are any important matters likely to affect your decision to buy, please contact us before viewing the property.