



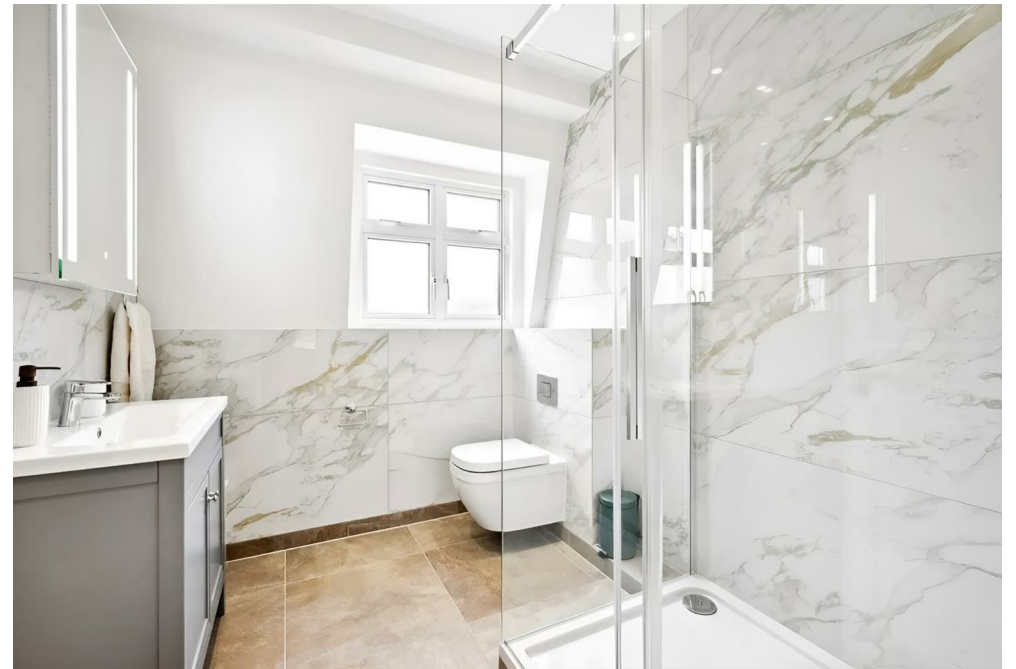
Bryanston Court George Street,
Marylebone, W1H

£2,845 Per Week,

NAPIER WATT

T: 0207 935 0011
E: enquiries@napierwatt.co.uk
W: napierwatt.co.uk

35 Berkeley Square, Mayfair, London, W1J 5BF







Description

Superbly presented four-bedroom penthouse in the desirable Bryanston Court. This stunning and newly refurbished apartment on the seventh floor (with lift) consists of a spacious living room, separate dining area, modern kitchen, four bedrooms, three bathrooms and a utility room. Located within walking distance from an array of local amenities and restaurants, this apartment benefits from the convenience of the Marylebone Village, Portman Village and is just a short walk away from Hyde Park. Available, furnished.

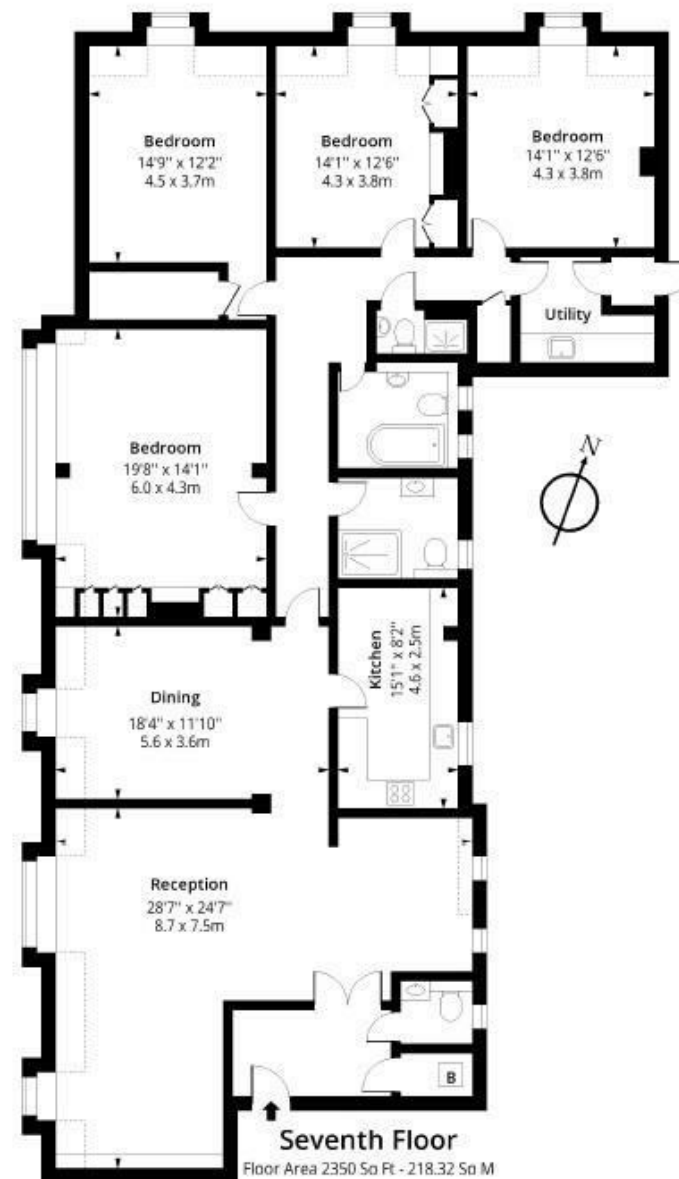
4 Bedrooms : 3 Bathrooms : Lift : Porter : Utility Room : Westminster Council Tax Band H : EPC Rating E

Key Features

- PENTHOUSE
- PASSENGER LIFT
- NEWLY REFURBISHED
- 24-HOUR CONCIERGE
- FOUR BEDROOMS

Terms

Fees & Charges: Tenancies exceeding £100,000 Per annum £480 inc VAT, Tenancies where a company is a tenant £480 Inc VAT



IMPORTANT: We would inform prospective purchasers that these sales particulars have been prepared as a general guide only. A detailed survey has not been carried out, nor the services, appliances and fittings tested. Room sizes should not be relied upon for furnishing purposes and are approximate. If floor plans are included, they are for guidance only and illustration purposes only and may not be to scale. If there are any important matters likely to affect your decision to buy, please contact us before viewing the property.